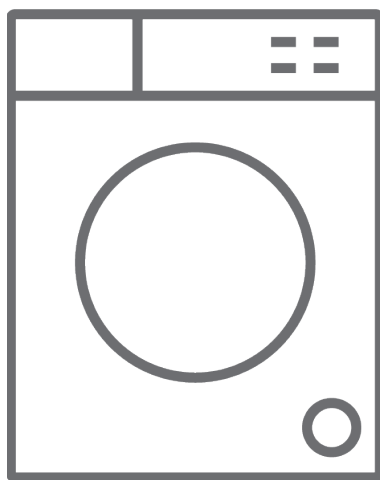


SHARP

中文 洗衣機/用戶手冊








ES-FS8ZH-W

感謝您選擇本產品。

本用戶手冊包含關於此家用電器的操作和維護的重要安全信息和說明。

在使用此家用電器之前請花費少許時間閱讀本用戶手冊。您應保管好本手冊，以供日後參考。

圖標	類型	意義
	警告	嚴重傷害或者死亡危險
	觸電危險	高壓危險
	火災	警告；火災/易燃物風險
	小心	人身傷害或財產損失風險
	重要/說明	正確地操作系統

內容

1.安全說明	1
1.1一般安全警告	2
1.2使用過程中	6
1.3包裝及環境	7
1.4節能信息	7
2.技術規格	8
2.1一般外觀	8
2.2技術規格	8
3.安裝	9
3.1拆除運輸螺栓	9
3.2調平洗衣機腳架	9
3.3電氣連接	9
3.4進水軟管連接	10
3.5排水管連接	10
4.控制面板概覽	11
4.1洗衣劑盒	11
4.2洗衣劑盒組件	12
4.3程序旋鈕	12
4.4電子顯示屏	12
5.洗衣機的使用	13
5.1衣物分類	13
5.2將衣物放入洗衣機	13
5.3向洗衣機中添加洗衣劑	14
5.4操作洗衣機	14
5.5選擇程序	14
5.6半載檢測系統	14
5.7輔助功能	15
5.8兒童鎖	18
5.9若您想暫停/取消正在運行的程序或添加衣物：	19
5.10程序結束	19
6.程序列表	20
7.清潔及維護	22
7.1警告	22
7.2進水過濾器	22
7.3排水泵過濾器	23
7.4洗衣劑盒	23
8.機體/滾筒	24
9.故障排查	25
10.自動故障警告及應對措施	26

1. 安全說明

工作電壓/頻率	(220-240) V~/50Hz
總電流 (A)	10
水壓 (Mpa)	最高1Mpa/最低 0.1Mpa
總功率 (W)	1850
最大洗滌容量 (乾衣) (公斤)	8

- 洗衣機不得安裝在地毯或者可能阻礙底座通風的表面。
- 本家用電器不可供體力、感知力或腦力下降或缺乏經驗和知識的人士（包括兒童）使用，除非對他們的安全負責的人員為其提供有關設備使用的監督或指導。
- 3歲以下的兒童應遠離本家用電器，除非能持續對其進行看管。
- 如果電源線發生故障，請致電最近的授權服務中心。
- 連接供水系統時只能使用機器隨附的新進水管。切勿使用老舊、使用過的或者受損的進水軟管。
- 兒童不得擺弄該家用電器。
- 若無人監督，兒童不得實施清潔和維護。



注意：要獲得本用戶手冊的電子版，請聯繫

以下地址：“washingmachine@standardtest.info”。在郵件中，請提供型號名稱及序列號（20位數字），可以在設備門上找到這些信息。

請仔細閱讀本用戶手冊。

該洗衣機僅供家用。將其用於商業用途將導致您的家用電器保修失效。



本手冊為多個型號編制，因此您的家用電器可能不具有本手冊內描述的一些功能。鑑於此，在閱讀操作手冊時必須特別注意所有相關數字。

1.1 一般安全警告

- 洗衣機運行的必要環境溫度為15°C-25°C。
- 如果溫度低於0 °C，軟管可能裂開或電路板可能無法正確工作。
- 請確保裝入洗衣機的衣服中沒有釘子、針、打火機及硬幣等異物。
- 建議首次洗滌時選擇90°純棉程序，不洗滌衣物，並在洗滌劑盒II格中放入一半合適的洗滌劑。
- 在每次清洗開始時只能將柔順劑或洗衣劑放置於洗衣劑盒中。
- 若洗衣機長時間不用，請拔下洗衣機插頭並關閉供水。我們也建議您將洗衣機門保持在打開狀態，防止洗衣機內部積聚水分。
- 由於生產過程中的質量檢查，一些水可能會留在洗衣機中。這不影響洗衣機運行。

- 洗衣機的包裝可能對兒童有害。請勿允許兒童擺弄包裝或者洗衣機的小零件。
- 將包裝材料存放於兒童無法觸及的地方，或以正確的方式對其進行處置。
- 預洗程序只用於嚴重髒污的衣物。

⚠切勿在洗衣機運行時打開洗衣劑盒。

- 若發生故障，將洗衣機與市電電源斷開，並關閉供水。請勿試圖執行任何維修。必須聯繫授權服務代理商。
- 請勿超出所選洗衣程序的最高負荷。

⚠洗衣機運行時，切勿強制打開機門。

- 洗滌含有粉狀物的衣物可能損壞機器。
- 若您打算在洗衣機內使用織物柔順劑或任何類似的產品，請按照製造商的有關使用此柔順劑或任何類似產品的相關指示進行操作。
- 確保洗衣機門活動不受限制，並且可以完全開啟。

將洗衣機安裝於完全通風且具有恆定空氣流通的場所。

機門應急打開功能

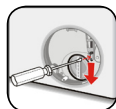
在機器運行，程序未完成或斷電的情況下，門將保持鎖定狀態。

若要打開機門：

1. 請關閉洗衣機。從主插座拔下電源插頭。
2. 要排出廢水，請按照清潔泵過濾器部分的說明進行操作。
3. 藉助工具拉下緊急打開裝置，同時打開機

門。

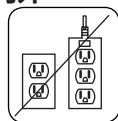
4. 如果門再次關閉後仍處於鎖定狀態，請將緊急開啟手柄移至打開位置。



⚠ 閱讀以下警告。請遵守給出的建議，保護您自己和他人免受各種風險和致命傷害。

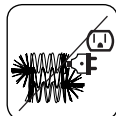
燒傷危險

⚠ 在洗衣機運行時請勿觸摸排水軟管或任何排出的水。高溫會導致燒傷危險。



⚠⚡ 因觸電導致的死亡危險

- 請勿使用延長引線連接洗衣機與市電電源。
- 請勿將損壞的插頭插入插座。
- 切勿通過拉電線從插座中拔下插頭。固定好插頭。
- 切勿在雙手帶有水分的情況下觸摸電源線/插頭，否則可能導致短路或者觸電。
- 若您的雙手或雙腳很濕，請勿觸摸洗衣機。
- 電源線/插頭損壞會導致火災或者觸電。損壞後必須更換，只能由專業人員進行更換。



⚠ 溢水危險

- 將排水軟管放置於洗滌槽中之前，檢查水流速度。
- 採取必要的措施防止軟管打滑。
- 若沒有正確固定軟管，水流可能導致軟管脫落。確保洗滌槽中的螺塞沒有堵住塞孔。

⚠火災危險

- 請勿將易燃液體放置於洗衣機附近。
- 脫漆劑含有的硫可能導致腐蝕。切勿在洗衣機中使用脫漆材料。
- 請勿在洗衣機中使用含有溶劑的產品。
- 請確保裝入洗衣機的衣服中沒有釘子、針、打火機及硬幣等異物。

火災和爆炸危險

⚠墜落及傷害危險

- 請勿攀爬洗衣機。
- 確保軟管及電纜不會引起絆倒風險。
- 請勿倒放或側放洗衣機。
- 請勿通過機門或洗衣劑盒抬起洗衣機。

⚠洗衣機必須至少由2個人搬運。




⚠兒童安全

- 請勿使兒童在無人看管的情況下靠近機器。兒童可能會將自己鎖在洗衣機中，從而導致死亡風險。
- 運行過程中請勿允許兒童觸摸玻璃門。玻璃表面會非常熱，可能對皮膚造成傷害。
- 讓兒童遠離包裝材料。
- 若誤食洗滌劑和清潔材料，或使其接觸到皮膚和眼睛，可能會出現中毒和刺激症狀。將清潔劑放至兒童觸及不到之處。



1.2使用過程中

- 使寵物遠離洗衣機。
 - 安裝前請檢查洗衣機包裝，在打開包裝後檢查洗衣機的外表面。若發現洗衣機損壞或包裝已被打開，請勿操作洗衣機。
 - 您的洗衣機只能由授權服務代理商安裝。由授權代理商以外的任何人安裝都可能導致您的保修失效。
 - 兒童和體力、感官或智力不佳以及缺乏經驗和知識的人不得在無人監護的情況下使用本設備。
 - 如無人監督，兒童不得執行清潔和用戶維護。
 - 該洗衣機僅可用於清洗那些製造商標明適合清洗的衣物。
 - 操作洗衣機前，請拆下洗衣機背面的4個運輸螺栓和橡膠墊片。若未拆下運輸螺栓，則可能導致洗衣機劇烈振動、發出強烈噪音和發生故障，並導致保修失效。
 - 因火災、溢水及其他損壞源等外部因素導致的損壞不在保修範圍內。
 - 請勿丟棄本用戶手冊；應妥善保管，以備日後參考並將其轉交給下一個用戶使用。
-  注意：因購買的產品不同，洗衣機的規格亦有所不同。

僅可由授權服務部門更換傳動帶。

必須使用原裝備用皮帶。

1.3包裝及環境

拆除包裝材料

包裝材料可保護洗衣機，防止在運輸期間發生任何損壞。包裝材料可回收，因此很環保。使用可回收利用的材料能降低原材料的消耗並減少廢物的產生。

1.4節能信息

有助於高效利用您的洗衣機的一些重要信息：

- 請勿超出所選洗衣程序的最高負荷。這將允許洗衣機在節能模式下運行。
- 請勿對輕微髒污的衣物使用預洗功能。這將幫助您節省使用的電量及水量。

歐盟符合性聲明

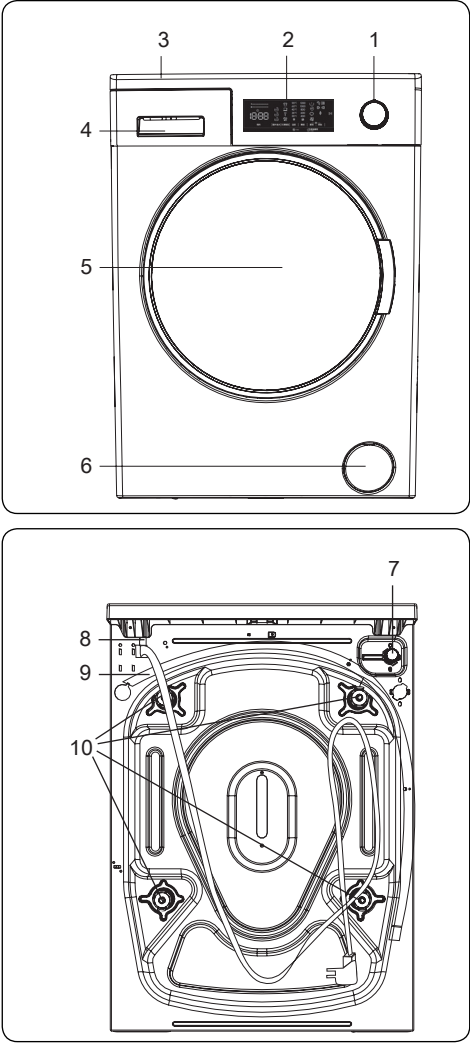
我們聲明，我們的產品符合適用的歐盟指令、決定和條例及引用的標準中列出的要求。

處置廢舊機器



本產品或其包裝上的符號表示本產品不得作為家庭垃圾處理。相反，應將其轉交給相應收集點，對電氣和電子設備進行回收利用。通過確保正確地處理本產品，您將有助於防止因本產品廢物處理不當而對環境和人類健康造成的潛在負面影響。有關本產品回收利用的更多詳細信息，請聯繫您當地的城市辦事處，家庭垃圾處置服務點或者向您出售本產品的店鋪。

2. 技術規格



2.1 一般外觀

- 1. 程序旋鈕
- 2. 電子顯示屏
- 3. 上方托盤
- 4. 洗衣劑盒
- 5. 滾筒
- 6. 泵過濾器蓋
- 7. 進水閥
- 8. 電源線

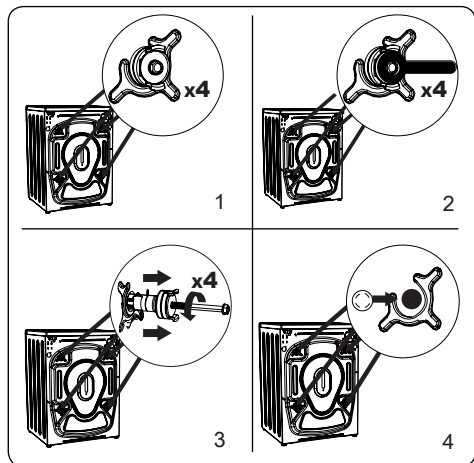
- 9. 排水軟管
- 10. 運輸螺栓

2.2技術規格

工作電壓/頻率 (V/Hz)	(220-240) V~/50Hz
總電流 (A)	10
水壓 (Mpa)	最大：1 Mpa 最小：0.1 Mpa
總功率 (W)	1850
最大乾洗容量 (kg)	8
甩乾轉速 (转/分钟)	1200
程序數量	15
尺寸 (mm)	
高度	845
寬度	597
深度	475

3. 安裝

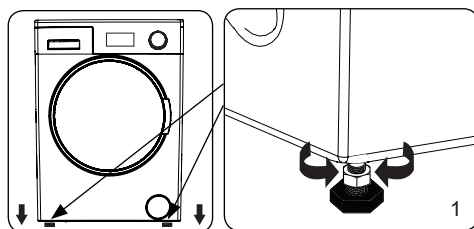
3.1 拆除運輸螺栓



1. 操作洗衣機前，請拆下洗衣機背面的4個運輸螺栓和橡膠墊片。若未拆下運輸螺栓，則可能導致洗衣機劇烈振動、發出強烈噪音和發生故障，並使保修失效。
2. 使用適當的扳手逆時針旋轉運輸螺栓，將其擰鬆。
3. 直接拉動，拆下運輸螺栓。
4. 將附件包中提供的塑料蓋帽裝入拆除運輸螺栓後留下的縫隙中。運輸螺栓應妥善存放，以備日後使用。

注意： 在首次使用洗衣機前拆下運輸螺栓。機器在安裝轉運螺栓的情況下運行所發生的故障不在保修範圍內。

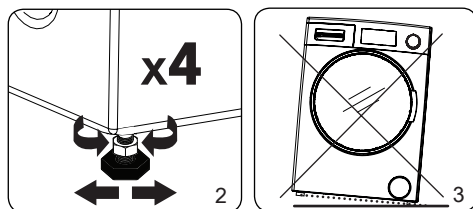
3.2 調平洗衣機腳架



1. 請勿將洗衣機安裝在阻礙基座通風的

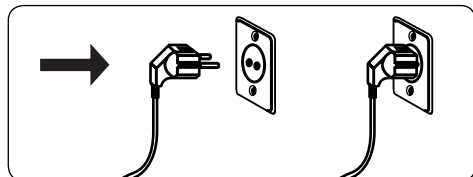
平面（例如地毯）上。

- 為了確保洗衣機能安靜並且無振動地工作，請將其安裝於穩固的平面上。
- 您可使用可調節支腳將洗衣機調節至水平。
- 鬆開鎖定螺母。



2. 順時針旋轉支腳，增加洗衣機的高度。逆時針旋轉支腳，降低洗衣機的高度。
- 洗衣機水平後，順時針轉動鎖緊螺母將其緊固。
3. 切勿在洗衣機下方插入紙板、木片或者其他類似材料以使洗衣機水平。
- 清潔洗衣機所在的地面時注意不要影響洗衣機的水平。

3.3 電氣連接

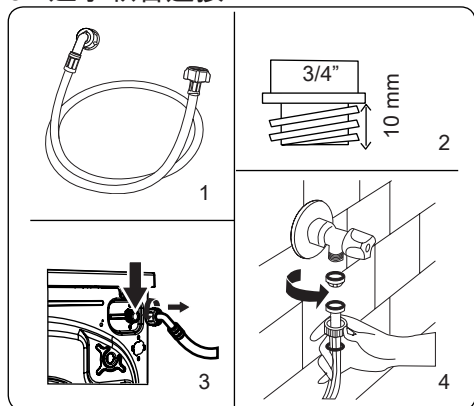


- 洗衣機需要220-240V，50的市電電源。
- 洗衣機的電源線配備有特定的接地插頭。該插頭應始終插入10安培的接地插座。
- 若您沒有適用的插座和符合此要求的保險絲，請確保由有資質的電工完成此工作。
- 對於因使用未接地設備而造成的損壞，我們概不負責。

注意： 在低電壓下操作洗衣機將導致洗衣機使用壽命縮短並使其性能

受到限制。

3.4 進水軟管連接



4. 因洗衣機規格不同，您的洗衣機可能具有單個進水管接頭（冷水）或雙進水管接頭（熱水和冷水）。帶有白色蓋帽的軟管應連接至冷水進口，帶有紅色蓋帽的軟管應連接至熱水進口（若適用）。
- 為了防止接頭漏水，軟管包裝中提供了1或2個螺母（視洗衣機規格而定）。將這些螺母安裝到與供水閥連接的進水軟管的末端上。
5. 將新的進水軟管連接至 $\frac{3}{4}$ ”螺紋水龍頭。
- 將進水軟管帶有白色蓋帽的一端與洗衣機背面的白色進水閥連接，將軟管帶有紅色蓋帽的一端與紅色進水閥連接（如果適用）。
- 用手擰緊連接處的塑料部件。若有任何懷疑，諮詢有資質的水管工。
- 壓力為0.1-1 Mpa的水流將使洗衣機

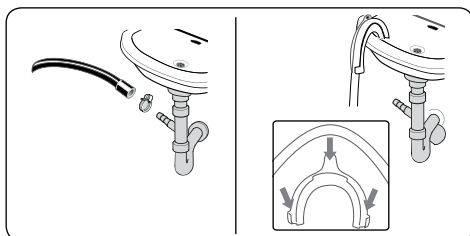
能在最佳效率下工作（0.1 Mpa的壓力錶示每分鐘有超過8升的水流過全開的水龍頭）。

6. 完成所有連接後小心地開啟供水閥，檢查是否有漏水。
7. 確保新的進水軟管沒有卡住、扭結、捲曲、摺疊或者破裂。
- 若洗衣機配有熱水供水接頭，則熱水供水源的溫度不得高於70°C。

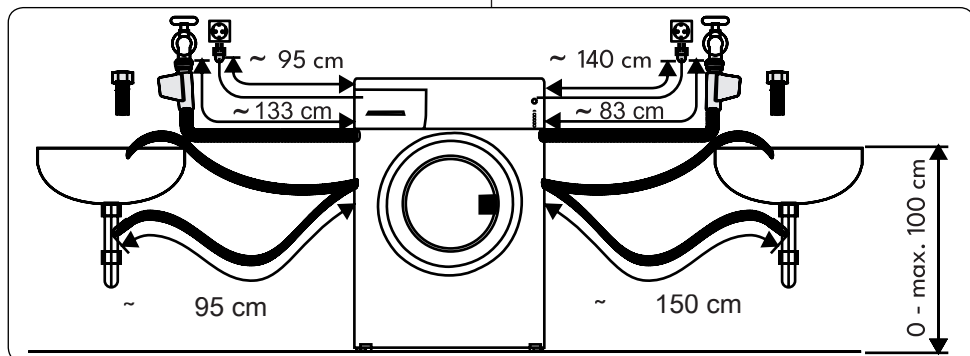


注意： 只能使用提供的新的注水軟管將洗衣機與水源相連接。不得重複使用老舊軟管。

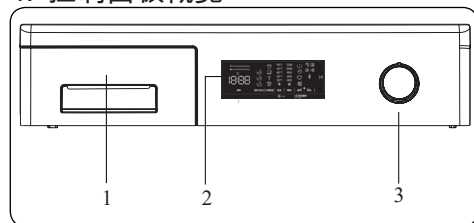
3.5 排水管連接



- 使用額外的設備將排水軟管與立管或者家用洗滌槽的排水彎管連接。
- 請勿試圖延長排水軟管。
- 請勿將洗衣機的排水軟管放置於容器、水桶或者浴缸中。
- 確保排水軟管沒有彎曲、卡固、破裂或者延長。
- 排水軟管必須安裝於最高距離地面100cm的高度下。

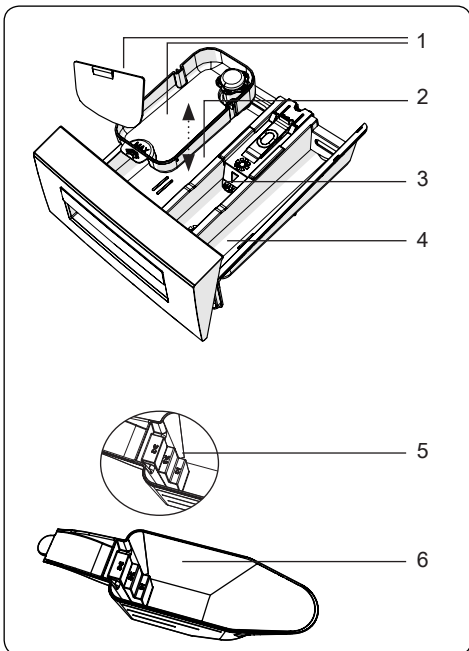
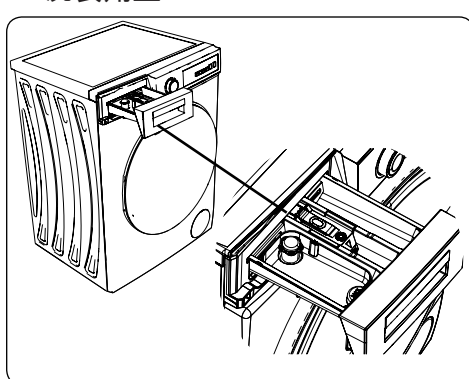


4. 控制面板概覽



1. 洗衣劑盒
2. 電子顯示屏
3. 程序旋鈕

4.1 洗衣劑盒

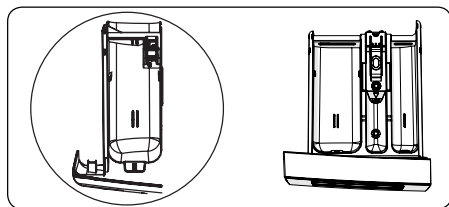


1. 洗衣液附件 (*)
2. 主洗衣劑盒
3. 柔順劑盒
4. 預洗洗衣劑盒
5. 洗衣粉用量
6. 洗衣粉勺 (*)

(*) 因購買的洗衣機不同，洗衣機規格亦有所不同。

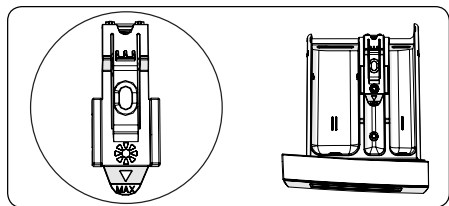
4.2 洗衣劑盒組件

主洗衣劑盒：



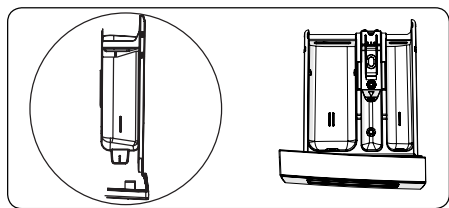
此盒用於放置洗衣液、洗衣粉或水垢去除劑。洗衣機內部將提供洗衣液液位板。(*)

織物柔順劑、漿粉，洗衣劑盒：



此盒用於柔順劑、調節劑或漿粉。請按包裝上的指示操作。若柔順劑在使用後有殘留物，請設法對其進行稀釋或使用液體柔順劑。

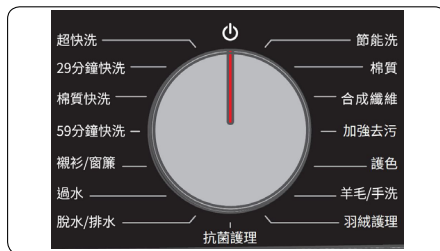
預洗洗衣劑盒：



只有在選擇預洗功能時，才可以使用此盒。我們建議僅對極髒的衣物使用預洗功能。

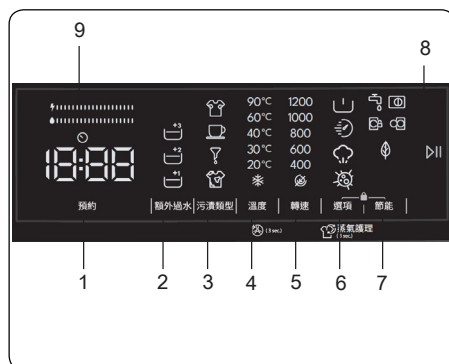
(*) 因購買的洗衣機不同，洗衣機規格亦有所不同。

4.3 程序旋鈕



- 要選擇需要的程序，順時針或逆時針旋轉程序旋鈕，直至程序旋鈕指向選擇的程序。
- 確保程序旋鈕準確地指向您需要的程序。

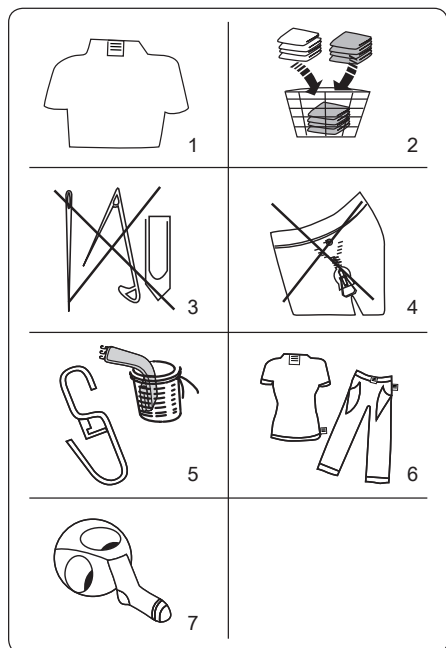
4.4 電子顯示屏



- 延遲啟動輔助功能
- 額外漂洗輔助功能
- 污漬選擇
- 選擇洗滌水溫
- 轉速選擇
- 選項
- Save+輔助功能
- 啟動/暫停鍵
- 電力/水效率指示條

5. 洗衣機的使用

5.1 衣物分類



1. 按照衣物上護理標籤上提供的指示操作。

- 根據衣物類型（純棉、化纖、敏感、羊毛等）、洗滌溫度（低溫、30°、40°、60°、90°）和髒污程度（輕微污漬、污漬、嚴重污漬）將衣物分類。

2. 請勿將彩色衣物和白色衣物一起洗滌。

- 深色衣物可能含有大量的染料，應分開多次洗滌。

3. 確保衣物或口袋中沒有金屬物品；若有，應取出。




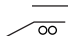
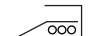










⚠️ 小心： 因異物損壞洗衣機導致的任何故障都不在保修範圍內。

4. 拉上拉鍊，緊固所有掛鉤和吊環。

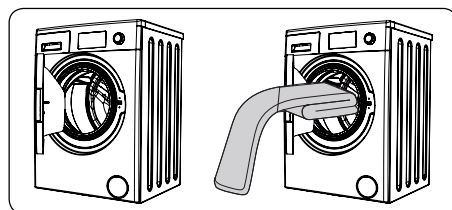
5. 取下窗簾的金屬或者塑料掛鉤或將其放置於洗衣網或洗衣袋中。

6. 將衣服翻轉過來。

7. 在洗衣網中洗滌襪子、手帕及其他小物件。

 可漂白	 請勿漂白	 正常洗滌
 熨燙溫度最高為150°C	 熨燙溫度最高為200°C	 請勿熨燙
 可乾洗	 不可乾洗	 平攤晾乾
 懸掛滴乾	 懸掛晾乾	 請勿使用烘乾機烘乾
 允許使用氣油、純酒精和R113乾洗	 全氯乙烯R11、R13、石油	 全氯乙烯R11、R113、汽油

5.2 將衣物放入洗衣機



• 打開您的洗衣機門。

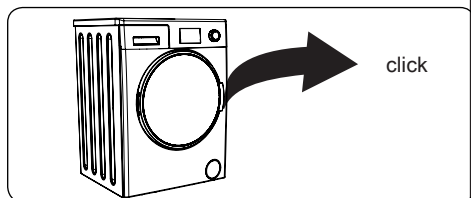
• 將衣物均勻地在洗衣機內攤開。

🚫 注意： 注意不要超過滾筒的最大裝載量，否則會導致洗滌效果不佳併產生褶皺。關於負荷容量的信息，請參閱洗滌程序表。

下表顯示了典型衣物的大致重量：

衣物類型	重量 (克)
毛巾	200
亞麻織物	500
浴袍	1200
被套	700
枕套	200
內衣	100
桌布	250

- 分開裝入各件衣物。
- 檢查是否有衣物卡在橡膠密封圈與機門之間。
- 輕輕推動機門直至關閉，發出咔嗒聲。



- 確保機門完全關閉，否則程序不會啟動。

5.3向洗衣機中添加洗衣劑

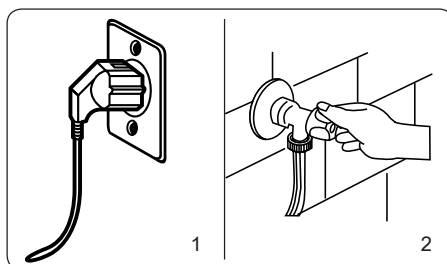
需要向洗衣機中添加的洗衣劑用量取決於以下標準：

- 若衣物僅輕微髒污，請不要預洗。將少量洗衣劑（製造商指定）放入洗衣劑盒I內。
- 使用製造商在包裝上建議的洗滌劑用量，避免形成過多泡沫及沖洗不乾淨。
- 如果衣物過髒，請選擇帶預洗功能的程序，並將1/4的洗滌劑放入洗滌劑抽屜的I格，其餘的放入II格。
- 使用自動洗衣機專用的洗衣劑。按製造商有關洗衣劑用量的說明操作。
- 在使用硬質水的地區，需要使用更多洗衣劑。
- 所需的洗衣劑用量將隨洗衣量的增大而增大。

- 將柔順劑放入洗衣劑盒的中間格。請勿超出MAX位標記。
- 粘稠的柔順劑可能導致洗衣劑盒堵塞，應稀釋柔順劑。
- 可在無預洗功能的所有程序中使用洗衣液。為此，將洗滌劑液位板（*）滑入洗滌劑盒II格的導軌中。將液位板上的線條用作引導線條，按引導線條將洗衣液加入洗衣劑盒至所需液位。

（*）因購買的洗衣機不同，洗衣機規格亦有所不同。

5.4操作洗衣機



1. 將洗衣機的電源插頭插入市電插座。
2. 打開供水。
 - 打開洗衣機門。
 - 均勻地將衣物放入洗衣機。
 - 輕輕推動機門直至關閉，發出咔嗒聲。

5.5選擇程序

使用程序表選擇最適合衣物的程序。

5.6半載檢測系統

您的洗衣機配有半載檢測系統。

若您放入機器的衣物少於最大裝載量的一半，無論您選擇何種程序，機器都會自動設置半載功能。這意味著選擇的程序會花更少的時間完成，並會使用更少的水和電量。

（*）取決於型號

5.7 輔助功能



啟動程序前，
您可以根據需要選擇輔助功能。

- 按下您想選擇的輔助功能鍵。
- 若輔助功能的符號在電子顯示屏中持續亮起，則所選輔助功能已開啟。
- 若輔助功能的符號在電子顯示屏上閃爍，則所選輔助功能將無法啟用。

無法啟用的原因：

- 該輔助功能可能不適用選定的洗滌程序。
- 機器可能已經通過了可以應用該輔助功能的步驟。
- 該輔助功能可能不兼容您之前選擇的另一個輔助功能。

1. 延遲啟動輔助功能



您可使用該輔助功能來將洗滌週期的開始時間延遲1至23個小時。

如需使用延時功能：

- 按下延時鍵一次。
- 將顯示“01h”。電子顯示屏上將顯示⌚。
- 按下延時鍵，直至到達您希望洗衣機開始洗滌週期的時間。
- 若您跳過了希望設置的延遲時間，可長按延時鍵，直至再次顯示所需

的延遲時間。

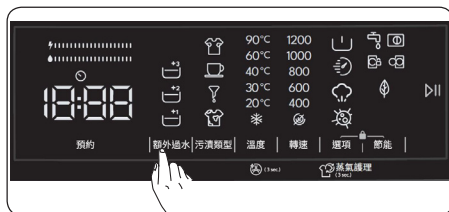
- 如需使用延時功能，您需要按下啟動/暫停鍵啟動洗衣機。

注意： 選擇延時功能後，不需要按開始/暫停鍵即可選擇其他功能，然後您可再按開始/暫停鍵開啟延時功能。

取消使用延時功能：

- 若您沒有按開始/暫停鍵，長按延時鍵，直到電子顯示屏顯示您選擇的程序的持續時間。一旦您在電子顯示屏上看到程序時間，則意味著延時已取消。
- 若您已按下啟動/暫停鍵來啟動洗衣機，只需按下延時鍵一次即可。⌚將在電子顯示屏上熄滅，按下啟動/暫停開始洗滌週期。

2. 額外漂洗輔助功能



您可使用此輔助功能對衣物進行額外漂洗。

- 在選擇洗衣程序或洗衣過程中，您可選擇1、2和3不同程度的額外漂洗。
- 按下顯示面板上的額外漂洗按鈕時，螢幕上會連續出現1、2、3符號。
- 所需層級的符號啟動時，您的選擇就完成了。

注意： 當您要選擇額外漂洗功能時，若螢幕上閃爍1符號，表示所選的洗衣程序無法使用此功能。

3. 污漬選擇



您可根據污漬類型，使用這些輔助功能來進行洗滌。

警告：不要讓洗衣機上的污漬變乾並粘住，以便讓專門用於污漬等級選擇的輔助功能充分發揮作用。事先清潔固體污漬。

警告：開始用產品清洗前，先用一塊布將洗衣機上新形成的污漬壓住。不要擦洗！

洗衣機會根據污漬類型來自動調節洗滌溫度、滾筒旋轉、漂洗次數和時間。

例如，洗衣機的污漬去除方式如下：

- 汗漬
- 咖啡漬
- 油漬
- 混合漬

汗漬：此附加功能將在所選程序前加一次冷水清洗。這將在選定的洗滌程序開始前，用冷水浸泡衣物，清洗汗漬。

咖啡漬：此附加功能將為所選程序增加新的清洗步驟。這將延長洗滌時間，並應用清洗算法去除污漬。

油漬：此附加功能將在所選程序前加一次冷水清洗，併為所選程序增加新的清洗步驟。這將在選定的洗滌程序開始前用冷水浸泡衣物並應用清洗算法去除油漬。

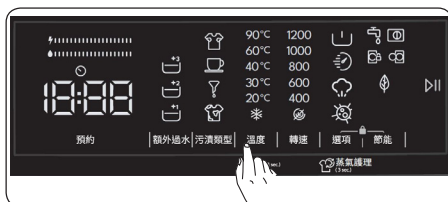
混合漬：此附加功能將在所選程序前加一次溫水清洗，併為所選程序增加新的清洗步驟。這將在選定的洗滌程序開始前，用溫水浸泡衣物，軟化混合污漬。

對於任何其他污漬選擇，類似的污漬去除方案皆可用。

(*) 視購買的產品不同，機器規格亦可能有所不同。

注意：洗滌前，您可在污漬類型之間切換。洗滌後，不能取消或切換選定的污漬類型。您可取消洗滌，然後選擇正確的污漬類型，再重新啟動程序。洗衣結束時，通過設定的污漬去除功能若沒有獲得理想的效果，可能是選擇了錯誤的類型；請使用正確的污漬選擇重新開始洗滌過程，從而去除污漬。

4. 選擇洗滌水溫



您可使用洗滌水溫設置鍵設置洗衣水的溫度。

- 您選擇新程序時，所選程序的最高溫度將顯示在洗滌水溫顯示屏上。
- 您可按下洗滌水溫設置鍵，在所選程序的最高水溫和冷水洗滌之間逐漸降低洗滌水溫(*)。
- 若您已跳過想要設置的洗滌水溫，應按住洗滌水溫鍵不放，直至重新找到所需的溫度。

⚠ 警告：按下洗衣水溫調整按鈕3秒即可為您的洗衣機進行滾筒清潔，它可以在所有程式位置進行調整。洗滌時請勿使用。您可使用洗衣機專用的除垢劑或洗衣機滾筒清潔劑。建議每個月使用一次。

5. 轉速選擇



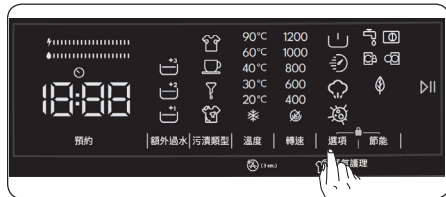
您可使用速度設置鍵設置洗滌轉速。

您選擇新程序時，所選程序的最大轉速將顯示在轉速顯示屏上。

您可按轉速設置鍵，在所選程序的最大轉速和取消甩乾（☹）選項之間逐漸降低轉速。

若您已跳過想要設置的轉速，應按住轉速鍵不放，直至重新找到所需的轉速。

6. 選項



您可使用輔助功能為您的衣物做出最佳的洗滌選擇。為此，您可以觸按顯示面板上的選項鍵啟用以下功能：

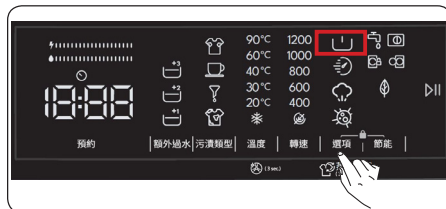
6.1 預洗功能

6.2 快速清洗功能

6.3 蒸汽功能

6.4 抗過敏功能。

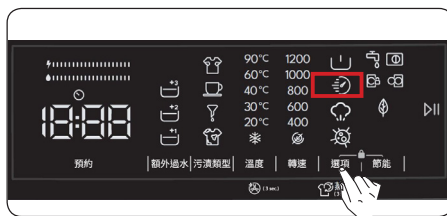
6.1 預洗功能



您可使用此輔助功能在主洗滌循環前對高度髒污的衣物進行預洗。使用此功能時需將洗滌劑添加到洗衣液盒的預洗壓出器中。要啟用預洗輔助功能，按住選項鍵直到預洗符號☹亮起。如果電子顯示屏上的預洗LED☹持續亮起，則表示選擇了該輔助功能。

注意： 當您想要選擇預洗輔助功能時，若顯示屏上未顯示☹，則表示該功能在所選洗滌程序中不可用。

6.2 快速清洗功能

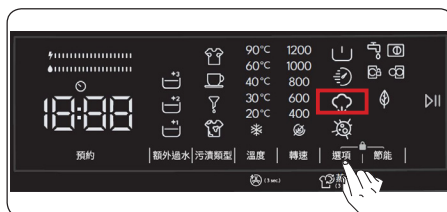


若選擇了此輔助功能，則洗衣機將縮短洗滌程序的持續時間。（建議洗衣機的衣物裝載量為所選洗滌程序衣物容量的一半或以下。）若要啟用此功能，您可輕觸顯示面板上的選項按鈕，開啟符號☹的LED。

注意： 若您在洗衣機中裝載的衣物量為所選洗滌程序衣物容量的一半或以下，則洗衣機將會通過半負載檢測系統檢測到衣物量情況，這樣洗衣機就會在更短的時間內以更少的電力和水洗滌您的衣物。

注意： 當您想要選擇快速清洗輔助功能時，若顯示屏上未顯示☹，則表示該功能在所選洗滌程序中不可用。

6.3 蒸汽功能



益於蒸汽系統，☹熨燙將變得更加快速和便捷。洗滌過程中使用的蒸汽能穿透衣物，使其變得鬆軟，這樣可消除褶痕，讓衣物變得柔軟精緻。

注意： 當您想要選擇蒸汽系統輔助功能時，若顯示屏上未顯示☹，則表示該功能在所選洗滌程序中不可用。

☹您可以按住「選項」按鈕3秒鐘來

對衣物執行刷新過程，它可以在所有程式位置進行調整。透過這種清新過程，蒸氣會滲透到衣物中，並通過去除不需要的氣味來清潔您的衣服。它最多可與 2 公斤的衣物一起使用。

6.4 抗過敏功能



您可使用此輔助功能添加另一個衣物漂洗循環。您的洗衣機將使用熱水完成所有漂洗步驟。（建議用於敏感皮膚的衣物、嬰兒衣物和內衣）。要啟用抗過敏輔助功能，按住選項鍵，直到抗過敏功能符號 亮起。若電子顯示屏上抗過敏LED 持續亮起，則表示選擇了該輔助功能。

注意： 當您想要選擇蒸汽系統輔助功能時，若顯示屏上未顯示 ，則表示該功能在所選洗滌程序中不可用。

7. Save+輔助功能



Save+洗滌輔助功能：

若選擇了此輔助功能，則洗衣機將略微延長洗滌程序的持續時間。但該功能將在洗滌循環中使用更少的電力和水。如要啟用此功能，可觸按顯示面板上的Save+選擇鍵，打開此符號的LED 。

(*) 視購買的產品不同，機器規格亦可能有所不同。

• 電力/水效率指示條：

是一個由2個條組成的效率指示器。電力/水效率指示條可顯示電力和水的消耗量。指示條越大，消耗的電力或者水就越多。電力/水效率指示條可能會延長或縮短，具體取決於所選程序的持續時間、溫度設置、轉速及其他輔助功能。

啟動/暫停鍵



您可通過按下啟動/暫停鍵來啟動您選擇的程序或暫停正在運行的程序。若將洗衣機切換至待機模式，電子顯示屏上的“啟動/暫停”led將閃爍。

5.8 兒童鎖

“兒童鎖”功能可以用於定按鈕，確保選擇的洗滌循環不會被意外更改。


若要激活兒童鎖，同時按住按鈕6和按鈕7至少3秒。當兒童鎖被激活後，“CL”將在電子顯示屏上閃爍2秒鐘。





若按下了任何按鈕或在兒童鎖功能已開啟時通過程序旋鈕更改了選擇的程序，“CL”符號將在電子顯示屏上閃爍2秒。

若兒童鎖功能已開啟並且程序正在運行，當您將程序旋鈕旋轉至“關”位置，並選擇另一程序時，之前選擇的程序會從其之前結束的位置繼續執行。

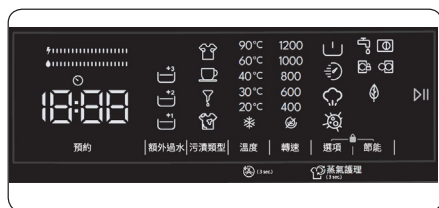
要停用兒童鎖，請同時按住按鈕6和按鈕7至少3秒，直至電子顯示屏上的“CL”符號消失。

 **注意：** 兒童鎖功能已開啟且斷電時，門保持解鎖狀態


5.9 若您想暫停/取消正在運行的程序或添加衣物：

- ▷|| 符號鍵允許您暫停或重啟所選程序。當您想添加衣物時，可使用此功能。
- 為此，請觸按▷||符號按鈕。若屏幕上顯示，則您可以打開裝載門添加衣物。
- 若屏幕上顯示，則表示可以添加衣物的步驟已過。
- 若您想取消正在運行的程序，請將程序旋鈕轉到“取消”位置。洗衣機將停止洗衣過程，並且程序將取消。將程序旋鈕轉到任何程序位置，排出洗衣機中的水。洗衣機將排水並取消程序。您可選擇新程序，啟動洗衣機。

5.10 程序結束



所選程序結束時，洗衣機將自動停機。

- 電子顯示屏會顯示“結束”。
- 您可打開門取出衣物。取出衣物後，保持開門狀態，可晾乾洗衣機內部。
- 將程序旋鈕轉到“取消”位置。
- 拔下洗衣機的插頭。
- 關上水龍頭。

6. 程序列表

程序	洗滌溫度 (°C)	最大乾衣容量 (kg)	洗衣劑盒	程序持續時間 (分鐘)	衣物類型/描述
節能洗	*40 - 60	8	2	218	髒污的純棉和亞麻織品。(內衣、床單、桌布、毛巾(最大4千克)、床上用品等。)
棉質	*60 - 40 - 30 -“- -C” - 90	8	2	110	重度髒污，純棉和亞麻織品。(內衣、床單、桌布、毛巾(最大4千克)、床上用品等。)
合成纖維	*40 - 30 - “- -C”	4	2	135	重度髒污或者合成纖維混紡織品。(尼龍襪、襯衫、寬衫、合成纖維長褲等)
加強去污	* 60 - 40 - 30 -“- -C”	4	1&2	122	重度髒污的純棉及亞麻織品。(內衣、床單、桌布、毛巾、寢具等)
護色	*20 -“- -C”	4	2	59	深色洗滌程序旨在安全洗滌深色衣物。該程序有助於防止褪色並保持深色的活力。它採用低溫溫和洗滌工藝，使黑色、海軍藍、深灰色和其他深色服裝長時間保持清新如新。
羊毛/手洗	*30 -“- -C”	2	2	54	帶有機洗標籤的羊毛衣物。/建議手洗或使用敏感衣物洗滌的衣物。
羽絨護理	*40 - 30 - “- -C”	3	2	87	洗滌帶有可機洗標籤的纖維羽絨被。(最多3公斤)
抗菌護理	*30 -“- -C” - 60 - 40	4	2	78	嬰兒衣物(選擇30°C溫度，可確保衣物衛生。選擇60°C溫度，您可進行更徹底的清洗和衛生消毒)
脫水/排水	*“- -C”	8	-	15	若您想在洗滌週期後增加甩乾步驟，您可以對任何類型的衣物使用該程序。/您可使用排水程序來排出機器內的積水(放入或拿出衣物)。將程序旋鈕轉到甩乾/排水程序，需啟用排水程序。當您使用輔助功能鍵選擇“取消甩乾”後程序將開始運行。
過水	*“- -C”	8	-	24	在洗滌循環後為所有類型的衣物提供額外漂洗功能。
襯衫/窗簾	*40 - 30 - “- -C”	4	2	77	在此程序中清洗窗簾和襯衫。(清洗窗簾的最大負載量應為2公斤)。
59分鐘快洗	* 60 - 40 - 30 -“- -C”	8	2	59	快洗程序只需59分鐘即可洗淨輕度髒污的淺色和白色衣物，可選擇的溫度最高可達60°C。程序能在可選擇的溫度下運行，提供適合各種織物的清潔，而程序能夠洗滌洗衣機滿容量的衣物，使您能夠輕鬆洗滌大量衣物。此外，您可降低溫度來清洗有色和深色衣物。
棉質快洗	*40 - 30 - “- -C” - 60	8	2	44	快洗程序只需44分鐘就能在最高40°C的可選溫度下洗淨輕微髒污或無斑點的彩色衣物。靈活的溫度選項可清洗適合各種織物類型的衣物，而機器可將衣物洗至滿負荷，讓您輕鬆清洗大量衣物。

程序	洗滌溫度 (°C)	最大乾衣容量 (kg)	洗衣劑盒	程序持續時間 (分)	衣物類型/描述
29分鐘快洗	*30 - “- -C”	4	2	29	快洗程序可幫您節省時間，只需29分鐘就能洗淨輕微髒污或無斑點的黑色和/或深色衣物，可選溫度最高達30°C。您只需使用洗衣機一半的容量就能快速清洗輕微髒污或無斑點的黑色或深色衣物，以實用的方式完成日常清潔工作。
(**) 超快洗	*30 - “- -C”	2	2	12	快洗程序可在極短的時間內（如12分鐘）清洗輕微髒污或無斑點的黑色或深色衣物，並可選擇最高30°C的溫度，從而節省時間。使用該程序，您可快速洗滌最多2公斤的衣物。該程序提供了極大的便利，尤其是在緊急情況下或需要快速清潔時。



注意： 程序的執行時間會隨著衣物量、自來水量、環境溫度和選擇的附加功能的變化而變化。

(*) 該程序的洗滌用水溫度為出廠默認設置。

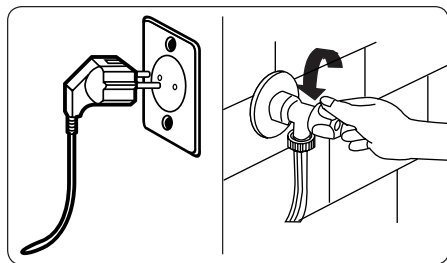
(**) 由於該程序的洗滌時間較短，我們建議使用較少的洗衣劑。若機器檢測到負載不均勻，程序持續時間可能會超過12分鐘。完成洗滌操作2分鐘後即可打開機門。（這2分鐘不包括在程序時長內）。



注意： 若在選擇程式後變更選項，溫度和速度值可能會改變。建議在啟動機器前進行檢查。

7. 清潔及維護

7.1 警告



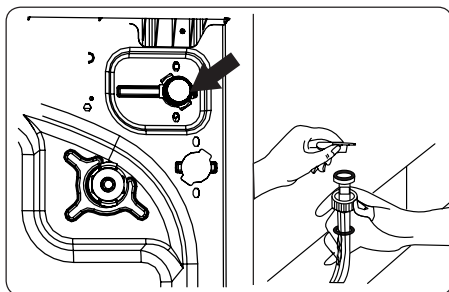
在維護和清潔洗衣機前應關閉市電電源，並將插頭從插座上拔下。

開始維護和清潔洗衣機前應關閉供水。

⚠️ 小心：請勿使用溶劑、擦洗劑、玻璃清潔劑或者通用清潔劑清潔洗衣機。其所含的化學物可能會損壞塑料表面及其他組件。

7.2 進水過濾器

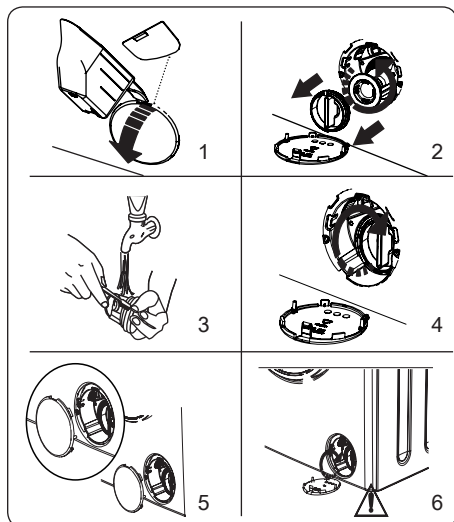
進水過濾器可防止髒物及異物進入洗衣機。我們建議即便已開啟供水並打開水龍頭，若洗衣機無法獲得足夠的水，就應對這些過濾器進行清潔。我們建議每2個月清潔一次進水過濾器。



- 從洗衣機上旋下進水軟管。
- 使用長尖嘴鉗輕輕拉動過濾器中的塑料杆，將進水過濾器從進水閥上拆下。
- 第二個進水過濾器位於進水軟管水龍頭端。使用長尖嘴鉗輕輕拉動過濾器中的塑料杆，拆下第二個進水過濾器。
- 使用軟刷徹底清潔過濾器並使用肥皂水清洗，之後徹底沖洗。輕輕地將過濾器推動到位，重新將其插入。

⚠️ 小心：進水閥處的過濾器可能因水質或者缺乏所需的維護而發生堵塞，並可能發生故障。這樣可能導致漏水。任何此類故障都不在保修範圍內。

7.3排水泵過濾器



洗衣機中的泵過濾器系統可以防止棉絨進入洗衣機，進而延長泵的壽命。我們建議每2個月清潔一次泵過濾器。泵過濾器位於前部右下角的護蓋之後。

如何清潔泵過濾器：

1. 您可以使用隨洗衣機一起提供的洗衣劑勺(*)或者洗衣液液位板打開泵蓋。
2. 將洗衣劑勺末端或洗衣液液位板嵌入泵蓋的開口，輕輕向後按壓。泵蓋將隨即開啟。
- 打開過濾器蓋之前，將容器放置於過濾器蓋下方，收集洗衣機中殘留的水。
- 逆時針旋轉松下過濾器，拉動將其取下。等待水排盡。

注意：視洗衣機內的水量不同，您可能必須將集水容器清空幾次。

3. 使用軟刷清除過濾器中的異物。
4. 清潔後將過濾器插入並順時針旋轉，重新安裝過濾器。
5. 關閉泵蓋後確保泵蓋內部的零件與前面板側的孔配合。

6. 合上過濾器蓋。

警告：泵中的水可能很熱，在實施任何清潔或維護之前應等待熱水完全冷卻。

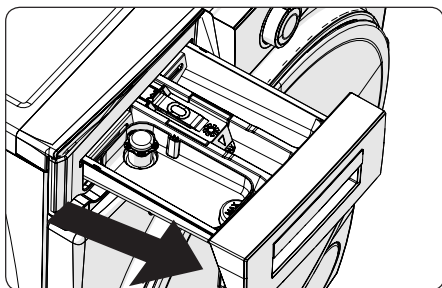
(*) 因購買的洗衣機不同，洗衣機規格亦有所不同。

7.4洗衣劑盒

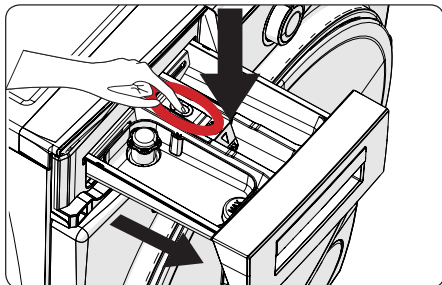
洗衣劑的使用可能導致洗衣劑盒在一段時間後積聚殘留的洗衣劑。我們建議您每過2個月將洗衣劑盒拆下一次，清除積聚的殘留物。

如需拆下洗衣劑盒：

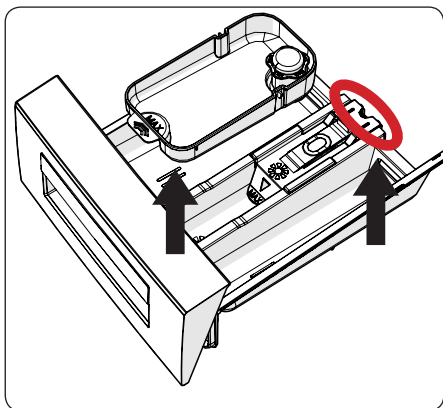
- 向前拉動洗衣劑盒，直至其完全伸出。



- 按住下圖所示您已經完全拉回的洗衣劑盒內的區域，繼續拉動並將洗衣劑盒從其位置上移開



- 拆下洗衣劑盒，拆解沖洗擋塊。徹底清潔，完全清除任何柔順劑殘留物。完成清潔後重新裝上衝洗擋塊，並檢查其是否已正確固定。



請勿在洗衣機內遺留金屬物品，例如針、回形針、硬幣等。這些物品將會導致滾筒內部產生鏽漬。若要清潔此類鏽漬，請使用不含氯的清潔劑並遵循清潔劑製造商的說明。切勿使用鋼絲刷或者類似的堅硬工具清潔鏽漬。

- 用刷子和大量的水沖洗。
- 將殘留物收集在洗衣劑盒內，以免落入洗衣機內。
- 使用毛巾或乾布擦乾洗衣劑盒，然後將其放回原位

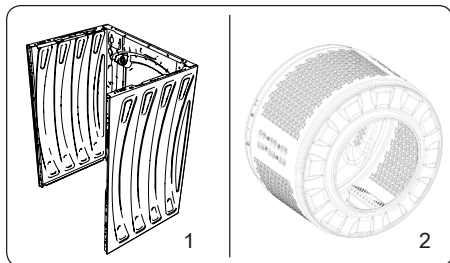
⚠ 切勿在洗碗機中清洗洗衣劑盒。

洗衣液裝置 (*)

為了清潔和維護液位洗滌劑裝置，請按下圖所示將其從所在位置上拆下，並徹底清理剩餘的洗滌劑殘留物。更換液位洗滌劑裝置。確保虹吸管內無殘留物質。

(*) 因購買的洗衣機不同，規格亦有所不同。

8. 機體/滾筒



7. 機體

使用溫和的非磨蝕性清潔劑或者肥皂和水清潔外壳。使用軟布擦乾。

8. 滾筒

9. 故障排查

洗衣機的維修應由授權的服務公司完成。若必須對洗衣機進行維修或無法通過以下提供的信息解決問題，則應該：

- 斷開洗衣機與市電電源。
- 關閉水龍頭。

故障	可能的原因	故障排查
洗衣機未啟動。	洗衣機未插電。	插入洗衣機電源插頭。
	保險絲髮生故障。	更換保險絲。
	無市電電源。	檢查市電電源。
	未按下“啟動/暫停”鍵。	按下“啟動/暫停”鍵。
	程序旋鈕處於“停止”位置。	將程序旋鈕旋轉至需要的位置。
	洗衣機門未完全關閉。	關閉洗衣機門。
洗衣機未進水。	水龍頭被關閉。	打開水龍頭。
	進水軟管可能扭結。	檢查進水軟管，消除扭結。
	進水軟管堵塞。	清潔進水軟管過濾器。(*)
	進水過濾器堵塞。	清潔進水過濾器。(*)
	洗衣機門未完全關閉。	關閉洗衣機門。
洗衣機不排水。	排水軟管堵塞或者扭結。	檢查排水軟管，清潔或者消除扭結。
	泵過濾器堵塞。	清潔泵過濾器。(*)
	衣物在滾筒中積壓過緊。	在洗衣機內均勻地攤開衣物。
洗衣機振動。	未調整支腳。	調整支腳。(**)
	未拆下用於運輸的運輸螺栓。	拆下洗衣機上的運輸螺栓。(**)
	在滾筒中裝入較少的衣物。	這不會妨礙洗衣機運行。
	洗衣機裝入衣物過多或衣物放置不均勻。	請勿使滾筒過載。在滾筒內均勻地攤開衣物。
洗衣劑盒內形成過多泡沫。	洗衣劑使用過多。	按下“啟動/暫停”鍵。要停止泡沫的產生，應將一勺柔順劑加入1/2升水中，並倒入洗衣劑盒中。5-10分鐘後，按下“啟動/暫停”鍵。
	使用了錯誤的洗衣劑。	僅使用自動洗衣機專用的洗衣劑。
洗衣效果不佳。	您的衣物太髒，不適合所選程序。	使用程序表中的信息選擇最適合的程序。
	洗衣劑用量不足。	使用包裝上指示的劑量。
	洗衣機中衣物過多。	檢查與是否已超出所選程序相關的最大容量。


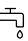

故障	可能的原因	故障排查
洗衣效果不佳。	硬質水。	按製造商有關洗衣劑用量的說明增大洗衣劑用量。
	您的衣物在滾筒中擠得太緊。	檢查衣物是否已攤開。
一旦洗衣機裝滿水，水就會排出。	排水軟管末端相對洗衣機太低。	檢查排水軟管是否處於合適的高度。 (**)。
洗滌期間滾筒內看不到水。	無故障。水位於滾筒不可見的部分。
衣物上有洗衣劑殘留。	一些洗衣劑未溶解的顆粒可能出現在衣物上，形成白點。	額外漂洗或在變乾後使用刷子清潔衣物。
衣物上出現灰色斑點。	衣物上存在未被處理的油、乳脂或者軟膏。	在下一次洗滌中使用包裝上指示的洗衣劑用量。
甩乾未啟動或晚於預期時間啟動。	無故障。失衡負荷控制系統已被激活。	失衡負荷控制系統將會嘗試攤開衣物。衣物攤開後甩乾循環將立即開始。將衣物均勻地裝入滾筒，執行下一次洗滌。

(*) 參閱與洗衣機維護及清潔有關的章節。

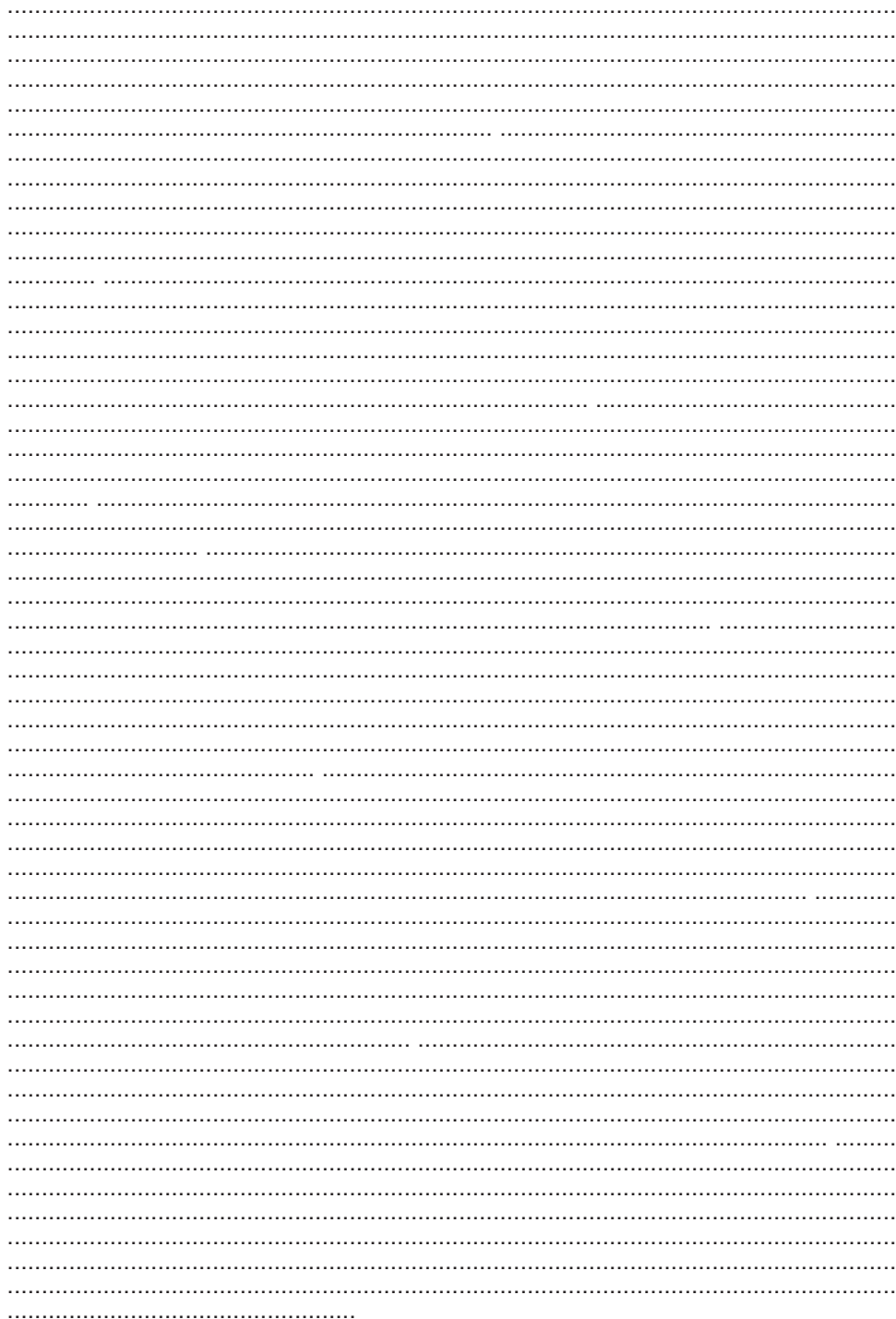
(**) 參閱與洗衣機安裝有關的章節。

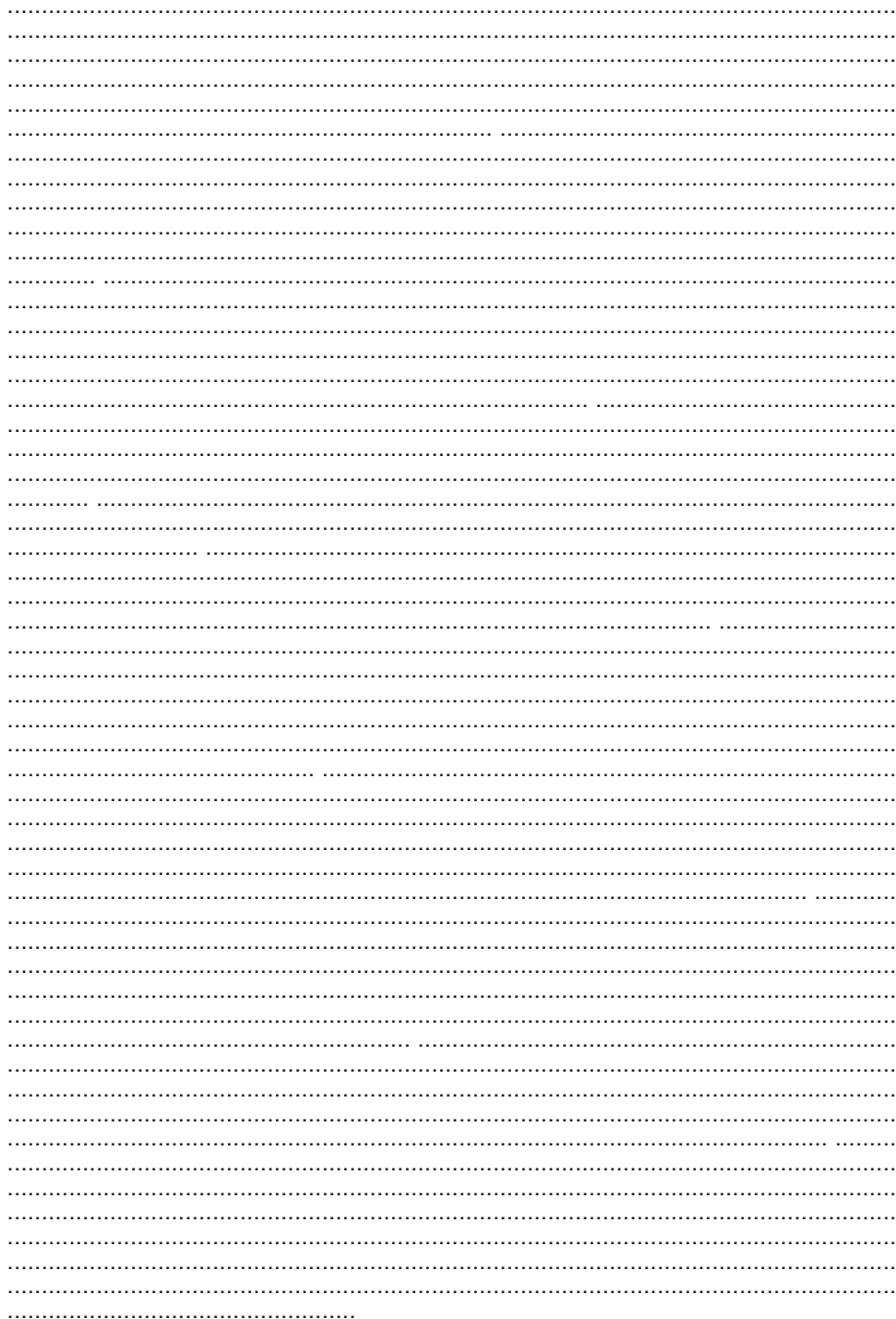
10. 自動故障警告及應對措施

洗衣機配有內置的故障檢測系統，通過洗滌操作指示燈閃爍的組合指示故障狀態。以下顯示了最常見的故障代碼。

故障代碼	可能的故障	應對措施
E01 	洗衣機門未正確關閉。	正確關閉機門，直至聽到咔嗒聲。若洗衣機繼續指示故障，應關閉洗衣機、斷開插頭並立即聯繫最近的授權服務代理商。
E02 	洗衣機內的水壓或者水位可能較低。	檢查水龍頭是否完全打開。自來水可能停水。若問題仍然存在，洗衣機將在較短的時間內自動停機。拔出洗衣機插頭、關閉水龍頭，並聯繫最近的授權服務代理商。
E03 	泵有故障，或泵過濾器堵塞，亦或是泵的電連接故障。	清潔泵過濾器。若問題仍然存在，請與附近的授權服務代理商聯繫。(*)
E04	洗衣機內水量過多。	洗衣機將自動排水。水排盡後，關閉洗衣機並拔出插頭。關閉水龍頭並聯繫最近的授權服務代理商。

(*) 參閱與洗衣機維護及清潔有關的章節。



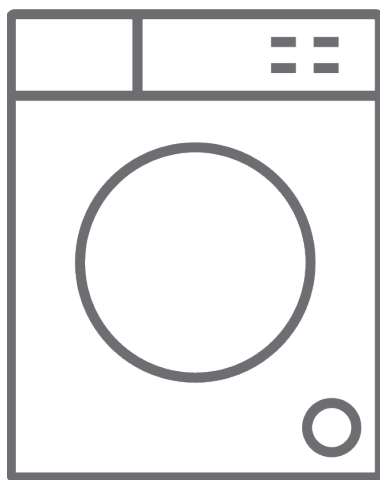




52548795

SHARP

EN Washing Machine / User Manual








ES-FS8ZH-W

Thank you for choosing this product.

This User Manual contains important safety information and instructions on the operation and maintenance of your appliance.

Please take the time to read this User Manual before using your appliance and keep this book for future reference.

Icon	Type	Meaning
	WARNING	Serious injury or death risk
	RISK OF ELECTRIC SHOCK	Dangerous voltage risk
	FIRE	Warning; Risk of fire / flammable materials
	CAUTION	Injury or property damage risk
	IMPORTANT / NOTE	Operating the system correctly

CONTENTS

1.SAFETY INSTRUCTIONS	1
1.1 General Safety Warnings	2
1.2 During Use	7
1.3 Packaging and Environment	9
1.4 Savings Information	9
2.TECHNICAL SPECIFICATIONS	11
2.1 General Appearance	11
2.2 Technical Specifications	11
3.INSTALLATION	12
3.1 Removing the Transit Bolts	12
3.2 Adjusting the Feet / Adjusting Adjustable Stays	12
3.3 Electrical Connection	12
3.4 Water Inlet Hose Connection	13
3.5 Water Discharge Connection	14
4.CONTROL PANEL OVERVIEW	14
4.1 Detergent Drawer	14
4.2 Sections	15
4.3 Program Dial	15
4.4 Electronic Display	15
5.USING YOUR WASHING MACHINE	16
5.1 Preparing Your Laundry	16
5.2 Putting Laundry in the Machine	16
5.3 Adding Detergent to the Machine	17
5.4 Operating Your Machine	17
5.5 Selecting a Programme	18
5.6 Half-Load Detection System	18
5.7 Auxiliary Functions	18
5.8 Child Lock	22
5.9 If you want to pause/cancel a running program or add laundry:	23
5.10 Program End	23
6.PROGRAMME TABLE	24
6.1 Important Information	27
7.CLEANING AND MAINTENANCE	28
7.1 Warning	28
7.2 Water Inlet Filters	28
7.3 Pump Filter	29
7.4 Detergent Drawer	29
8.BODY / DRUM	30
9.TROUBLESHOOTING	31
10.AUTOMATIC FAULT WARNINGS AND WHAT TO DO	33

1. SAFETY INSTRUCTIONS

Operating voltage / frequency	(220-240) V~/50Hz
Total current (A)	10
Water pressure (Mpa)	Maximum 1 Mpa / Minimum 0. 1Mpa
Total power (W)	1850
Maximum washing capacity (dry laundry) (kg)	8

- Do not install your machine on a carpet or such grounds that would prevent the ventilation of its base.
- The appliance is not intended for use by people (including children) with reduced physical, sensory or mental capabilities, or lack of experience and knowledge unless they have been given supervision or instruction concerning use of the appliance by a person responsible for their safety.
- Children of less than 3 years should be kept away unless continuously supervised.
- Call the nearest authorised service centre for a replacement if the power cord malfunctions.
- Use only the new water inlet hose that is provided with your machine when connecting to water supply. Never use old, used or damaged water inlet hoses.

- Children should not play with the appliance.
- Cleaning and user maintenance should not be made by children without supervision.

NOTE: For a softcopy of this user manual, please contact the following address: “washingmachine@standardtest. info”. In your e-mail, please provide the model name and serial number (20 digits) which you can find on the appliance door.

Read this user manual carefully.

**Your machine is for domestic use only.
Using it for commercial purposes will cause
your warranty to be cancelled.**



This manual has been prepared for more than one model therefore your appliance may not have some of the features described within. For this reason, it is important to pay particular attention to any figures whilst reading the operating manual.

1.1 General Safety Warnings


- The necessary ambient temperature for operation of your Washing Machine is 15-25 °C.
- Where the temperature is below 0 °C, hoses may split or the electronic card may not operate correctly.
- Please ensure that garments loaded into your

Washing Machine are free from foreign objects such as nails, needles, lighters and coins.

- **It is recommended that for your first wash, you select the 90° Cotton programme without laundry and half fill compartment II of the detergent drawer with a suitable detergent.**
- Residue may build up on detergent and softeners exposed to air for a long period of time. Only put softener or detergent in the drawer at the beginning of each wash.
- Unplug your Washing Machine and switch off the water supply if the Washing Machine is left unused for a long time. We also recommend that you leave the door open to prevent build up of humidity inside the Washing Machine.
- Some water may be left in your Washing Machine as a result of quality checks during production. This will not affect the operation of your Washing Machine.
- The packaging of the machine could be hazardous to children. Do not allow children to play with the packaging or small parts from the Washing Machine.
- Keep the packaging materials in a place where children cannot reach them, or dispose of them appropriately.
- Use pre-wash programs only for very dirty laundry.

 Never open the detergent drawer while the machine is running.

- In the event of a breakdown, unplug the machine from the mains supply and turn the water supply off. Do not attempt to carry out any repairs. Always contact an authorised service agent.
- Do not exceed the maximum load for the washing programme you have chosen.

 Never force the door open when your Washing Machine is running.

- Washing laundry containing flour may damage your machine.
- Please follow the manufacturers' instructions regarding the use of fabric conditioner or any similar products that you intend to use in your Washing Machine.
- Make sure that the door of your Washing Machine is not restricted and can be opened fully.

Install your machine in a location that can be fully ventilated and preferably has constant air circulation.

Door emergency opening function

The door will remain locked when the machine is running, when the programme is not yet complete or in the event of a power cut.

To open the door;

1. Please turn off the machine. Take off the power plug from the mains socket.
2. To drain the waste water, follow the instructions given in cleaning the pump filter section.
3. Pull down the emergency opening mechanism with the help of a tool and open the door at the same time.
4. If the door remains locked after being closed again, move the emergency opening handle to the open position.



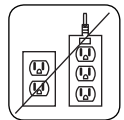
! Read these warnings. Follow the ad.

! Read these warnings. Follow the advice given to protect yourself and others from risks and fatal injuries.

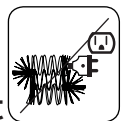
RISK OF BURNS

! Do not touch the drain hose or any discharged water while your Washing Machine is running. The high temperatures involved pose a burn risk.

!! RISK OF DEATH FROM ELECTRICAL CURRENT



- Do not connect your Washing Machine to the mains electricity supply using an extension lead.
- Do not insert a damaged plug into a socket.
- Never remove the plug from the socket by pulling the cord. Always hold the plug.
- Never touch the power cord/plug with wet



hands as this could cause a short circuit or electric shock.



- Do not touch your Washing Machine if your hands or feet are wet.
- A damaged power cord/plug can cause fire or give you an electric shock. When damaged it must be replaced, this should only be done by qualified personnel.



Risk of flooding

- Check the speed of water flow before placing the drain hose in a sink.
- Take necessary measures to prevent the hose from slipping.
- Water flow may dislodge the hose if it is not properly secured. Make sure the plug in your sink does not block the plug hole.

Danger of Fire

- Do not store inflammable liquids near your machine.
- The sulphur content of paint removers may cause corrosion. Never use paint removing materials in your machine.
- Never use products that contain solvents in your machine.
- Please ensure that garments loaded into your Washing Machine are free from foreign objects such as nails, needles, lighters and coins.

Risk of fire and explosion

⚠ Risk of falling and injury

- Do not climb on your Washing Machine.
- Make sure hoses and cables do not cause a trip hazard.
- Do not turn your Washing Machine upside down or on its side.
- Do not lift your Washing Machine using the door or detergent drawer.

⚠ The machine must be carried by at least 2 people.



⚠ Child safety

- Do not leave children unattended near the machine. Children might lock themselves in the machine resulting in risk of death.
- Do not allow children to touch the glass door during operation. The surface becomes extremely hot and may cause damage to skin.
- Keep packaging material away from children.
- Poisoning and irritation may occur if detergent and cleaning materials are consumed or come into contact with the skin and eyes. Keep cleaning materials out of the reach of children.



1.2 During Use

- Keep pets away from your machine.

- Please check the packaging of your machine before installation and the outer surface of the machine once the packaging has been removed. Do not operate the machine if it appears damaged or if the packaging has been opened.
- Your machine must only be installed by an authorised service agent. Installation by anyone other than an authorised agent may cause your warranty to be void.
- Children and persons with reduced physical, sensory or mental capabilities and lack of experience and knowledge should not use this appliance without supervision.
- Cleaning and user maintenance shall not be done by children without supervision.
- Only use your machine for laundry that is labelled as suitable for washing by the manufacturer.
- **Before operating the washing machine, remove the 4 transit bolts and rubber spacers from the rear of the machine. If the bolts are not removed they may cause heavy vibration, noise and malfunction of the machine and cause the guarantee to be void.**
- Your warranty does not cover damage caused by external factors such as fire, flooding and other sources of damage.

- Please do not throw away this user manual; keep it for future reference and pass it onto the next owner.

NOTE: Specifications for the machine may vary depending on the product purchased.

Replacement of drive belt, only by authorized service.

Only original spare belt must use.

1.3 Packaging and Environment

Removal of packaging materials

Packaging materials protect your machine from any damage that might occur during transportation. The packaging materials are environmentally friendly as they are recyclable. Use of recycled material reduces raw material consumption and decreases waste production.

1.4 Savings Information

Some important information to get the most efficient use out of your machine:

- Do not exceed the maximum load for the washing programme you have chosen. This will allow your machine to run in energy saving mode.
- Do not use the pre-wash feature for lightly soiled laundry. This will help you save on the amount of electricity and water consumed.

CE Declaration of conformity

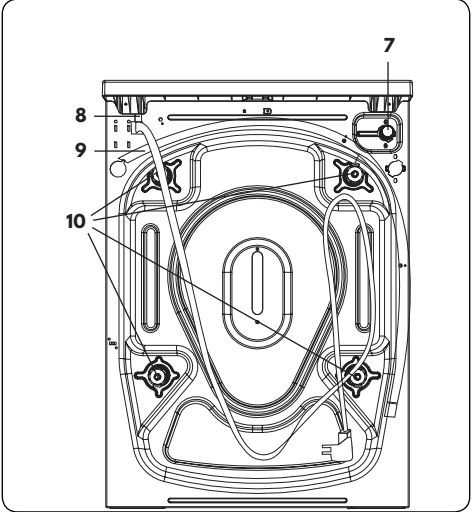
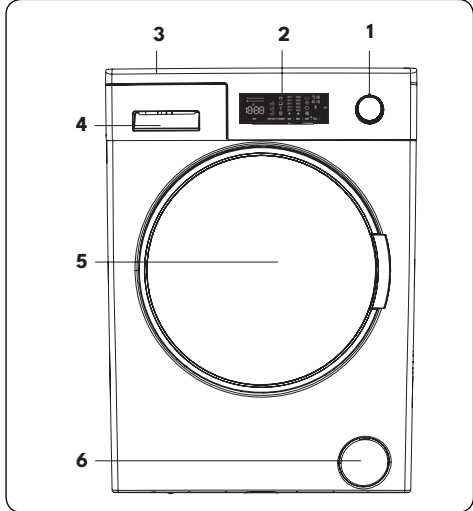
We declare that our products meet the applicable European Directives, Decisions and Regulations and the requirements listed in the standards referenced.

Disposal of your old machine



The symbol on the product or on its packaging indicates that this product may not be treated as household waste. Instead it shall be handed over to the applicable collection point for the recycling of electrical and electronic equipment. By ensuring this product is disposed of correctly, you will help prevent potential negative consequences for the environment and human health, which could otherwise be caused by inappropriate waste handling of this product. For more detailed information about recycling of this product, please contact your local city office, your household waste disposal service or the shop where you purchased the product.

2. TECHNICAL SPECIFICATIONS



2.1 General Appearance

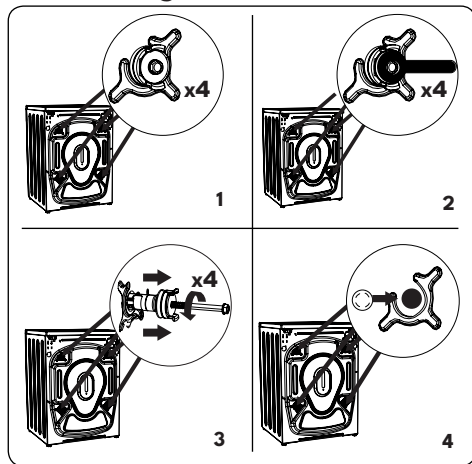
- 1. Programme Dial
- 2. Electronic Display
- 3. Upper Tray
- 4. Detergent Drawer
- 5. Drum
- 6. Pump Filter Cover
- 7. Water Inlet Valve
- 8. Power Cable
- 9. Discharging Hose
- 10. Transit Bolts

2.2 Technical Specifications

Operating voltage / frequency (V/Hz)	(220-240) V~/50Hz
Total current (A)	10
Water pressure (Mpa)	Maximum: 1 Mpa Minimum : 0.1 Mpa
Total power (W)	1850
Maximum dry laundry capacity (kg)	8
Spinning revolution (rev / min)	1200
Programme number	15
Dimensions (mm)	
Height	845
Width	597
Depth	475

3. INSTALLATION

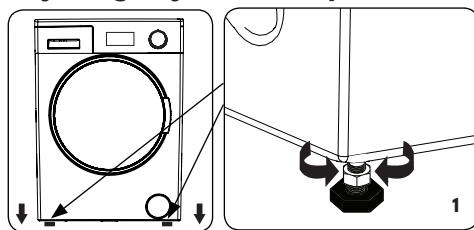
3.1 Removing the Transit Bolts



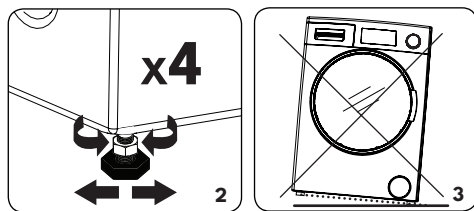
1. Before operating the washing machine, remove the 4 transit bolts and rubber spacers from the rear of the machine. If the bolts are not removed, they may cause heavy vibration, noise and malfunction of the machine and void the warranty.
2. Loosen the transit bolts by turning them anticlockwise with an appropriate spanner.
3. Remove the transit bolts with a straight pull.
4. Fit the plastic blanking caps supplied in the accessories bag into the gaps left by the removal of the transit bolts. The transit bolts should be stored for future use.

NOTE: Remove the transit bolts before using the machine for the first time. Faults occurring due to the machine being operated with transit bolts fitted are out of the scope of the warranty.

3.2 Adjusting the Feet / Adjusting Adjustable Stays

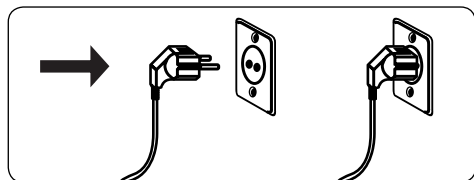


1. Do not install your machine on a surface (such as carpet) that would prevent ventilation at the base.
 - To ensure quiet and vibration-free operation of your machine, install it on a firm surface.
 - You can level your machine using the adjustable feet.
 - Loosen the locking nut.



2. To increase the height of the machine, turn the feet clockwise. To decrease the height of the machine, turn the feet anticlockwise.
 - Once the machine is level, tighten the locking nuts by turning them clockwise.
3. Never insert cardboard, wood or other similar materials under the machine to level it.
 - When cleaning the ground on which the machine is located, take care not to disturb the level of the machine.

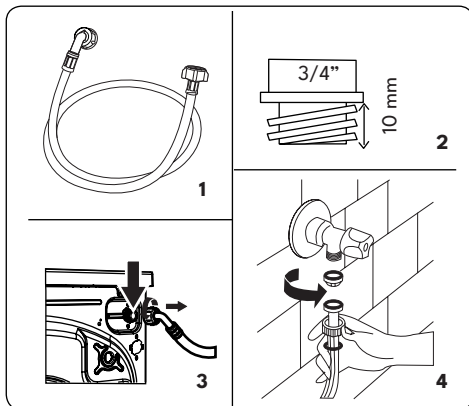
3.3 Electrical Connection



- Your Washing Machine requires a 220-240V, 50 mains supply.
- The mains cord of your washing machine is equipped with an earthed plug. This plug should always be inserted to an earthed socket of 10 amps.
- If you do not have a suitable socket and fuse conforming with this, please ensure the work is carried out by a qualified electrician.
- We do not take responsibility for damage that occurs due to the use of ungrounded equipment.

NOTE: Operating your machine with low voltage will cause the life cycle of your machine to be reduced and its performance to be restricted.

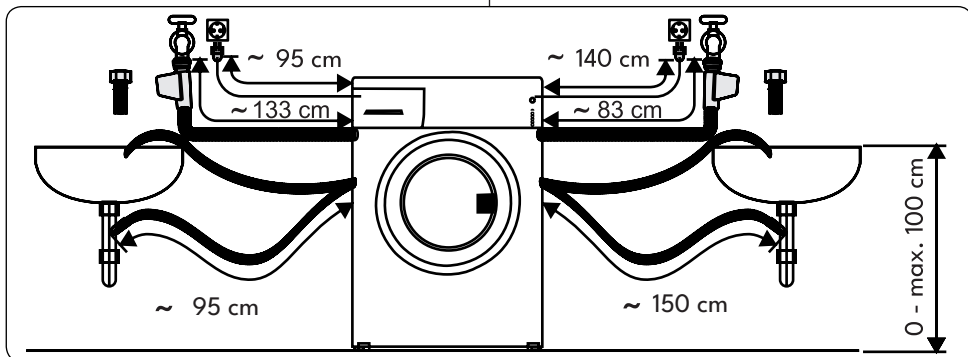
3.4 Water Inlet Hose Connection



1. Your machine may have either a

single water inlet connection (cold) or double water inlet connection (hot and cold) depending on the machine specifications. The white capped hose should be connected to cold water inlet and red capped hose to the hot water inlet (if applicable).

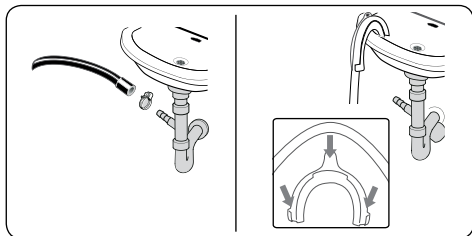
- To prevent water leaks at the joints, either 1 or 2 nuts (depending on your machine's specifications) are supplied in the packaging with the hose. Fit these nuts to the end(s) of the water inlet hose that connect to the water supply.
2. Connect new water inlet hoses to a $\frac{3}{4}$ " , threaded tap.
 - Connect the white capped end of the water inlet hose to the white water inlet valve on the rear side of the machine and the red capped end of the hose to the red water inlet valve (if applicable).
 - Tighten the plastic parts of the connections by hand. If in any doubt, consult a qualified plumber.
 - Water flow with pressure of 0. 1-1 Mpa will allow your machine to operate at optimum efficiency (pressure of 0. 1 Mpa means that more than 8 litres of water per minute will flow through a fully opened tap).
3. Once you have made all of the connections, carefully turn the water supply on and check for leaks.
 4. Ensure that the new water inlet hoses are not trapped, kinked, twisted, folded or crushed.



- If your machine has a hot water inlet connection, the temperature of the hot water supply should not be higher than 70°C.

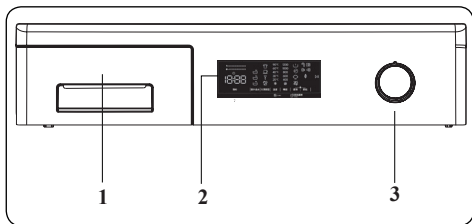
NOTE: Your Washing Machine must only be connected to your water supply using the supplied new fill hose. Old hoses must not be reused.

3.5 Water Discharge Connection



- Connect the water drain hose to a standpipe or to the outlet elbow of a household sink, using additional equipment.
- Never attempt to extend the water drain hose.
- Do not put the water drain hose from your machine into a container, bucket or bathtub.
- Make sure that the water drain hose is not bent, buckled, crushed or extended.
- The water drain hose must be installed at a maximum height of 100 cm from the ground.

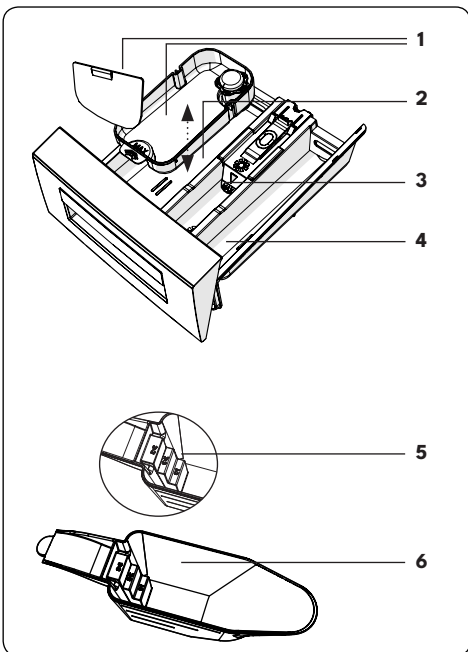
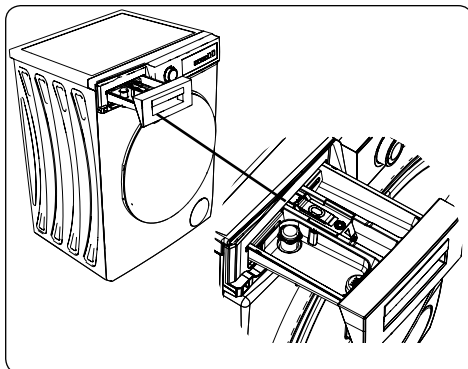
4. CONTROL PANEL OVERVIEW



1. Detergent Drawer
2. Electronic Display

3. Programme Dial

4.1 Detergent Drawer

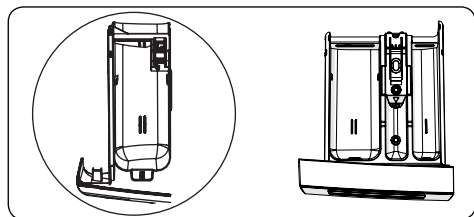


1. Liquid Detergent Attachments (*)
2. Main Wash Detergent Compartment
3. Softener Compartment
4. Pre-Wash Detergent Compartment
5. Powder Detergent Levels
6. Powder Detergent Scoop (*)

(*) Specifications may vary depending on the machine purchased.

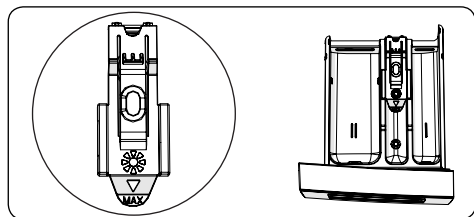
4.2 Sections

Main wash detergent compartment:



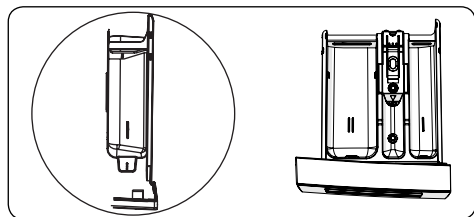
This compartment is for liquid or powder detergents or limescale remover. The fluid detergent level plate will be supplied inside your machine. (*)

Fabric conditioner, starch, detergent compartment:



This compartment is for softeners, conditioners or starch. Follow the instructions on the packaging. If softeners leave residue after use, try diluting them or using a liquid softener.

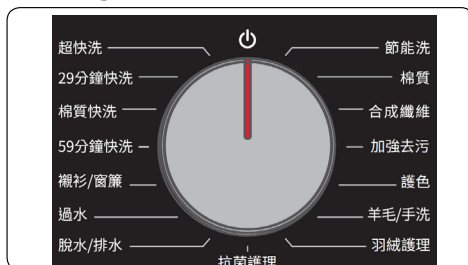
Pre-wash detergent compartment:



This compartment should be used only when the pre-wash feature is selected. We recommend that the pre-wash feature is used only for very dirty laundry.

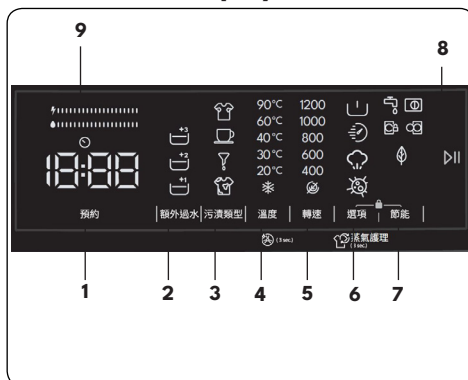
(*) Specifications may vary depending on the machine purchased.

4.3 Program Dial



- To select the desired programme, turn the programme dial either clockwise or anti-clockwise until the marker on the programme dial points to the chosen programme.
- Make sure that the programme dial is set exactly to the programme you want.

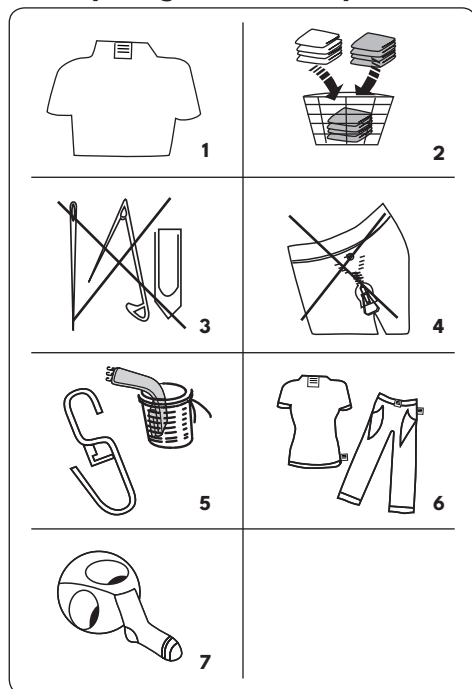
4.4 Electronic Display



- Delayed start auxiliary function
- Extra rinse auxiliary function
- Stain selection
- Selecting the washing water temperature
- Spin speed selection
- Options
- Save+ auxiliary function
- Start Pause button
- Energy/Water efficiency bar

5. USING YOUR WASHING MACHINE

5.1 Preparing Your Laundry




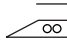
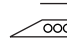


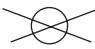









- Follow the instructions given in the care labels on the clothing.
 - Separate your laundry according to type (cotton, synthetic, sensitive, wool etc.), washing temperature (cold, 30°, 40°, 60°, 90°) and the degree of dirtiness (slightly stained, stained, highly stained).
- Never wash coloured and white laundry together.
 - Dark textiles may contain excess dye and should be washed separately.
- Ensure that there are no metallic materials on your laundry or in the pockets; if so, remove them.

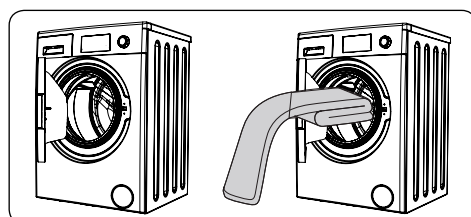
CAUTION: Any malfunctions which occur due to foreign materials damaging your machine are not covered

by the warranty.

- Close zips and fasten any hooks and eyes.
- Remove the metallic or plastic hooks off curtains or place them in a washing net or bag.
- Turn garments inside out.
- Wash socks, handkerchiefs and other small items in a washing net.

 Can be bleached	 Do not bleach	 Normal washing
 Maximum ironing temperature 150°C	 Maximum ironing temperature 200°C	 Do not iron
 Can be dry cleaned	 No dry cleaning	 Dry flat
 Drip dry	 Hang to dry	 Do not tumble dry
 Dry cleaning in gas oil, pure alcohol and R113 is allowed	 Perchloroethylene R11, R13, Petroleum	 Perchloroethylene R11, R13, Gas oil

5.2 Putting Laundry in the Machine



- Open the door of your machine.

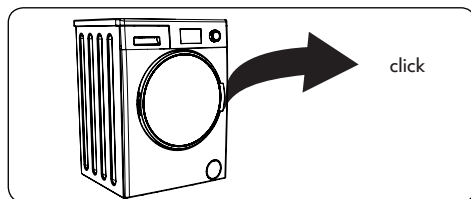
- Spread your laundry evenly in the machine.

NOTE: Take care not to exceed the maximum load of the drum as this will give poor wash results and cause creasing. Refer to the washing programme tables for information on load capacities.

The following table shows approximate weights of typical laundry items:

LAUNDRY TYPE	WEIGHT (gr)
Towel	200
Linen	500
Bathrobe	1200
Quilt cover	700
Pillow slip	200
Underwear	100
Tablecloth	250

- Load each item of laundry separately.
- Check that no items of laundry are trapped between the rubber seal and the door.
- Gently push the door until it clicks shut.



- Make sure the door is fully closed, otherwise the programme will not start.

5.3 Adding Detergent to the Machine

The amount of detergent you will need to put in your machine will depend on the following criteria:

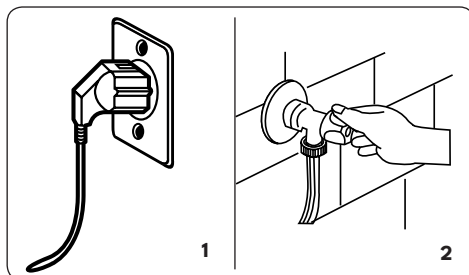
- If your clothes are only slightly soiled, do not pre-wash. Put a small amount of detergent (as specified by the manufacturer) into compartment II of the detergent drawer.
- Using the amounts of detergent

recommended by the manufacturer on the packaging prevents excessive foam formation and poor rinsing.

- If your clothes are excessively soiled, select a programme with pre-wash and put $\frac{1}{4}$ of the detergent to be used into compartment I of the detergent drawer and the rest in compartment II.
- Use detergents produced for automatic washing machines. Follow the manufacturer's instructions on the amount of detergent to use.
- In areas of hard water, more detergent will be required.
- The amount of the detergent required will increase with higher washing loads.
- Put softener in the middle compartment of the detergent drawer. Do not exceed the MAX level.
- Thick softeners may cause clogging of the drawer and should be diluted.
- It is possible to use fluid detergents in all programmes without a pre-wash. To do this, slide the fluid detergent level plate (*) into the guides in compartment II of the detergent drawer. Use the lines on the plate as a guide to fill the drawer to the required level.

(*) Specifications may vary depending on the machine purchased.

5.4 Operating Your Machine



1. Plug your machine in to the mains supply.
 2. Turn on the water supply.
- Open the machine door.

- Evenly spread your laundry in the machine.
- Gently push the door until it clicks shut.

5.5 Selecting a Programme

Use the programme table to select the most appropriate programme for your laundry.

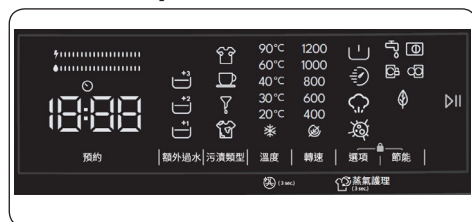
5.6 Half-Load Detection System

Your machine features a half-load detection system.

If you put less than half the maximum load of laundry into your machine it will automatically set the half-load function, regardless of the programme you selected. This means that the selected programme will take less time to complete and will use less water and energy.

(*) Model Dependant

5.7 Auxiliary Functions



Before starting the program, you can select auxiliary functions if you wish so.

- Press the key of the auxiliary function you want to select.
- If the symbol of the auxiliary function is continuously on in the electronic display, the selected auxiliary function will be enabled.
- If the symbol of the auxiliary function is flashing in the electronic display, the selected auxiliary function will not be enabled.

Reason for not enabling the function:

- That auxiliary function might not be available for the selected washing program.
- The machine might have passed the

step where that auxiliary function could be applied.

- The auxiliary function might be incompatible with another auxiliary function you have previously selected.

1. Delayed start auxiliary function



You can use this auxiliary function to delay the start time of the washing cycle for 1 to 23 hours.

To use the delay function:

- Press the delay key once.
- "01h" will be displayed. ⌚ will turn on in the electronic display.
- Press the delay key until you reach the time after which you want the machine to start the washing cycle.
- If you have skipped the delay time you would like to set, you can keep pressing the delay key until you reach that time again.
- To use the time delay function, you need to press the Start/Pause key to start the machine.

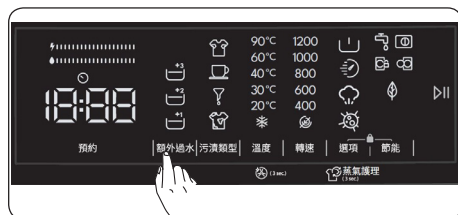
NOTE: After selecting the delay function, you can select other functions without touching the "Start/Pause" key, and then you can touch the "Start/Pause" key to enable time delay.

To cancel the delay function:

- If you did not press the Start/Pause key, keep touching the delay key until the electronic display shows the duration of the program you have selected. Once you see the program time on the electronic display, this means that the delay has been cancelled.
- If you have pressed the Start/Pause

key to start the machine, you just need to touch the delay key once.
⌚ will go off on the electronic display, press “Start/Pause” key to start the washing cycle.

2. Extra rinse auxiliary function

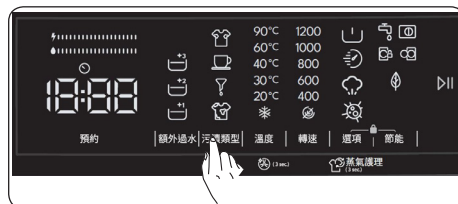


You can use this auxiliary function for extra rinse on your laundry.

- During the selection of the washing program or during the washing process, you can select 1 2 and 3 different levels of extra rinse.
- When you press the Extra rinse button on the display panel, the , , symbols will appear on the screen consecutively.
- Your selection will be completed when the symbol of the desired level is activated.

NOTE: When you want to select extra rinse function, if symbol flashes on the screen, this means that this feature is not available in the selected washing program.

3. Stain selection



You can make use of these auxiliary functions on washing depending on the types of stains.

Warning: Do not let the stains on your laundries to get dry and stuck in order

for the auxiliary function dedicated for soiling level selection to fully perform its functions. Clean the solids beforehand.

Warning: Press on the newly formed stains on your laundries with a piece of cloth before starting to wash them in your product. Do not scrub!

Your washing machine adjusts the washing temperature, drum rotation, and number and duration of rinse automatically according to the type of stain.

For example, the stain removal methods of your washing machine are as follows:

- Sweat stain
- Coffee stain
- Oil stain
- Mix

Sweat stain: This additional function will add a cold rinse before the selected programme. This will soak the laundry with cold water to clean the sweat stains before the selected washing programme starts.

Coffee stain: This additional function will add new washing steps for selected program. This will prolong the washing duration and apply a washing algorithm to remove the stain.

Oil stain: This additional function will add a cold rinse before the selected programme and will add new washing steps for selected program. This will soak the laundry with the cold water before the selected washing program and apply a washing algorithm to clean the oil stain.

Mix: This additional function will add a warm rinse before the selected programme and will add new washing steps for selected washing program. This will soak the laundry with warm water to soften the mix stains before the selected washing programme starts.

For any other stain selection, similar stain removal solutions are available.

(*) The appliance specifications may vary depending on the purchased product.

NOTE: Before starting your machine, you can switch between stain types. Once you have started the machine, you cannot cancel or change the selected stain type. You can cancel the washing program of your machine, and select the correct stain type and restart the program. If the desired results could not be achieved with the set stain selection at the end of washing, you may have selected the wrong type; restart the washing cycle with the correct stain selection to remove the stain.

4. Selecting the washing water temperature



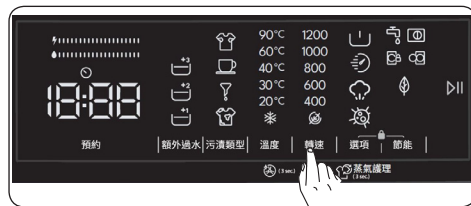
You can use the washing water temperature setting key to set the temperature of the washing water for your laundry.

- When you select a new program, the selected program's maximum temperature will be displayed on the washing water temperature display.
- You can press the washing water temperature setting key to decrease the washing water temperature gradually between the maximum water temperature of the selected program and cold water wash (※).
- If you have skipped the washing water temperature you wanted to set, keep pressing the washing water temperature key to find the desired temperature again.

⌚ You can perform drum cleaning for your machine by pressing the washing water temperature adjustment button for 3 seconds, it can be adjusted in all program positions. It should be used without laundry. You can use a descaler

specially developed for washing machines or a washing machine drum cleaning detergent. It is recommended to use once a month.

5. Spin speed selection

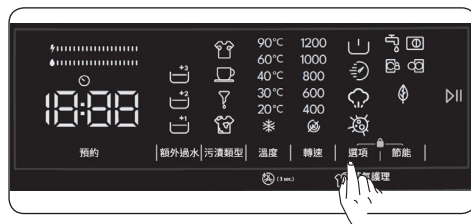


You can use the speed setting key to set the spin speed for your laundry. When you select a new program, the selected program's maximum spin speed will be displayed on the spin speed display.

You can press the spin speed setting key to decrease the spin speed gradually between the selected program's maximum spin speed and the spin cancelled (⊗) option.

If you have skipped the spin speed you wanted to set, you can keep pressing the spin speed key to find the desired speed again.

6. Options



You can use auxiliary functions to make the best washing selection for your laundry. To do this, you can touch the options key on the display panel to enable the following:

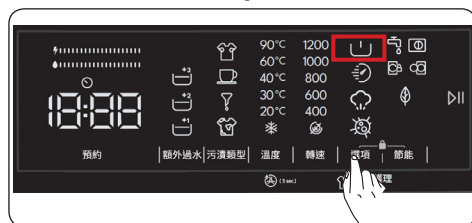
6.1 Prewash auxiliary function



6.2 Rapid wash auxiliary function


6.3 Steam Assist auxiliary function

6.4 Anti-Allergy auxiliary function.

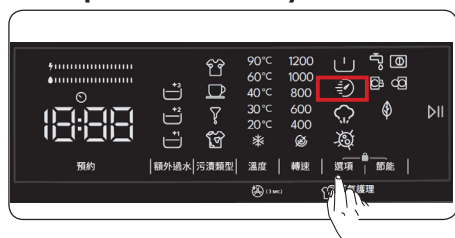
6.1 Prewash auxiliary function




You can use this auxiliary function to perform pre-wash before the main wash cycle for your highly soiled laundry. When you use this function, you need to add detergent into the prewash dispenser of the detergent drawer. To enable the prewash auxiliary function, press the options key until the prewash symbol  turns on. If the prewash LED  is constantly on in the electronic display, it means that the auxiliary function is selected.

NOTE: When you want to select the prewash auxiliary function, if  does not appear on the display, this means that this feature is not available in the selected washing program.

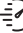
6.2 Rapid Wash auxiliary function



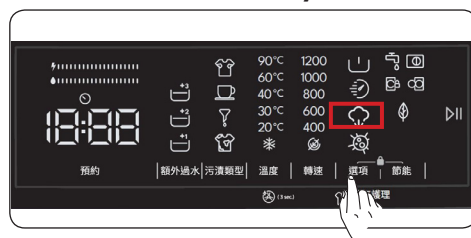
If you select this auxiliary function, your machine will shorten the duration of the washing program. (It is recommended to load the machine with half or less than half of the capacity of the selected washing program.) To enable this function, you can touch the Options button on the display panel to turn on the LED light of the symbol .


NOTE: If you load the machine with half or less than half of the laundry


capacity of the selected washing program, the machine will detect it thanks to the half load detection system, and this way, it will wash your laundry with less energy and less water in a shorter time.


NOTE: When you want to select the rapid wash auxiliary function, if  does not appear on the display, this means that this feature is not available in the selected washing program.

6.3 Steam Assist auxiliary function

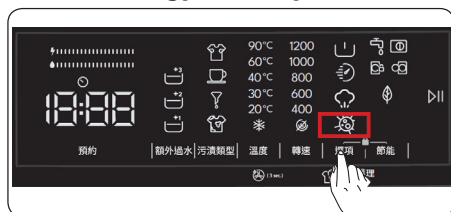


Owing to the steam system  ironing has become quick and as easy. The steam used dream washing penetrates and loosens the fibres, eliminates creases and leaves our clothes soft and delicate.

NOTE: When you want to select the steam system auxiliary function, if  does not appear on the display, this means that this feature is not available in the selected washing program.

 You can perform a refresh process for your laundry by pressing the Options button for 3 seconds, it can be adjusted in all program positions. Thanks to this refresh process, steam penetrates the laundry and cleans your clothes by removing unwanted odors. It should be used with a maximum of 2 kg of laundry.

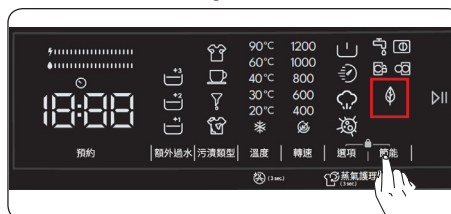
6.4 Anti-Allergy auxiliary function



You can use this auxiliary function to add another rinse cycle for your laundry. Your machine will use hot water in all rinsing steps. (It is recommended for sensitive skin clothing, baby clothes and underclothes). To enable the Anti-Allergy auxiliary function, keep pressing the options key until the Anti-Allergy function symbol turns on. If the Anti-Allergy LED is constantly on in the electronic display, it means that the auxiliary function is selected.

NOTE: When you want to select the Anti-Allergy auxiliary function, if does not appear on the display, this means that this feature is not available in the selected washing program.

7. Save+ auxiliary function



Save+ washing auxiliary function:

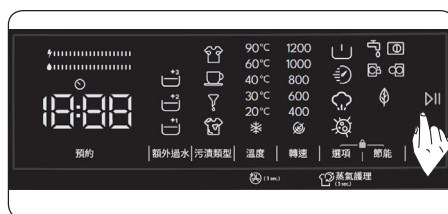
If you select this auxiliary function, your machine will slightly extend the duration of the washing program. However, it will use less energy and water for the washing cycle. To enable this function, you can touch the Save+ selection key on the display panel to turn on the LED light of the symbol .

(*) The appliance specifications may vary depending on the purchased product.

• Energy/Water Efficiency Bar:

“” is an efficiency indicator comprising 2 bars. The energy/water efficiency bar shows the amount of energy and water consumption. The bigger the bar is, the more energy or water consumption you will have. The energy/water efficiency bar might extend or shorten depending on the selected program's duration, temperature setting, spin speed and other auxiliary functions.

Start/Pause button



By pressing on the Start/Pause button, you may start the programme you have selected or suspend a running programme. If you switch your machine to the standby mode, the Start/Pause LED on the electronic display will blink.

5.8 Child Lock

The Child Lock function allows you to lock the buttons so that the wash cycle you have chosen cannot be changed unintentionally.

To activate child lock, press and hold buttons 6 and 7 simultaneously for at least 3 seconds. “CL” will flash on the electronic display for 2 seconds when the child lock is activated.



If any button is pressed or selected programme is changed by the programme dial while the child lock is active, the “CL” symbol will flash on the electronic display for 2 seconds.

If the child lock function is active and a programme is running, when the programme dial is turned to the “Off” position and another programme is selected the previously selected programme continues from where it was left.

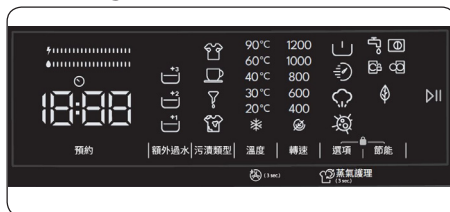
To deactivate the child lock, press and hold buttons 6 and 7 simultaneously for at least 3 seconds until the “CL” symbol on the electronic display disappears.

NOTE: Door remains unlocked in case when child lock is active and electricity is cut off

5.9 If you want to pause/cancel a running program or add laundry:

- symbol key allows you to pause or restart the selected program. When you want to add laundry, you can use this function.
- Touch symbol button for this. If is displayed on the screen, you can open the loading door and add laundry.
- If is displayed on the screen, the step where you can add laundry has passed.
- If you want to cancel a running program, turn the program knob to “CANCEL” position. Your machine will stop washing process and the program will be cancelled. To drain the water in the machine, turn the program knob to any program position. Your machine will drain the water and cancel the program. You can select a new program and start the machine.

5.10 Program End



Your machine will automatically stop when the selected program ends.

- “End” will appear on the electronic display.
- You can open the door and take out the laundry. After taking out the laundry, leave the door open so that the inside of the machine can dry.
- Turn the program knob to CANCEL position.
- Unplug the machine.
- Turn off the water tap.

6. PROGRAMME TABLE

Programme	Washing temperature (°C)	Maximum dry laundry amount (kg)	Detergent compartment	Programme duration (Min.)	Laundry type / Descriptions
節能洗	*40 - 60	8	2	218	Dirty cotton and flax textiles. (Underwear, linen, tablecloth, towel (max. 4 kg), bedclothes, etc.)
棉質	*60 - 40 - 30 - “- -C” - 90	8	2	110	Very dirty, cotton and flax textiles. (Underwear, linen, tablecloth, towel (max. 4 kg), bedclothes, etc.)
合成纖維	*40 - 30 - “- -C”	4	2	135	Dirty or synthetic-mixed textiles. (Nylon socks, shirts, blouses, synthetic-including trousers etc.)
加強去污	* 60 - 40 - 30 - “- -C”	4	1&2	122	Very dirty cotton and flax textiles. (Underwear, linen, tablecloth, towel)
護色	*20 - “- -C”	4	2	59	The Dark Color Wash Program is designed to safely wash your dark colored clothes. This program helps prevent fading and preserves the vibrancy of dark colors. It uses a gentle washing process at low temperatures to keep black, navy, dark gray, and other dark garments looking fresh and new for a longer time.
羊毛/手洗	*30 - “- -C”	2	2	54	Woollen laundries with machine wash labels. / Laundry recommended for hand wash or sensitive laundry.
羽絨護理	*40 - 30 - “- -C”	3	2	87	For washing a fibre duvet with a machine washable label. (max. 3 kg)
抗菌護理	*30 - “- -C” - 60 - 40	4	2	78	Baby laundry (With the 30°C temperature selection, you can ensure hygiene on your laundry. With the 60°C temperature selection, you can provide a more intensive wash and hygiene)
脫水/排水	*“- -C”	8	-	15	You can use this program for any type of laundry if you want an additional spin step after the washing cycle./ You can use the drain program to drain the water accumulated inside the machine (adding or removing laundry). To enable the drain program, turn the program knob to the spin/drain program. After you select “spin cancelled” using the auxiliary function key, the program will start to run.
過水	*“- -C”	8	-	24	Provides an additional rinse to any type of laundry after the washing cycle.
襯衫/窗簾	*40 - 30 - “- -C”	4	2	77	Wash Curtains and Shirts in this program. (The maximum load for washing curtains should be 2 kg.)
59分鐘快洗	* 60 - 40 - 30 - “- -C”	8	2	59	The quick wash program cleans your lightly soiled light-coloured and white laundry in just 59 minutes at selectable temperatures up to 60°C. The ability of the program to operate at selectable temperatures provides cleaning suitable for various types of fabric, while the ability of the program to wash laundry up to the full capacity of the machine allows you to wash large amounts of laundry easily. Additionally, you can wash your colored and dark colored laundry by reducing the temperature.

Programme	Washing temperature (°C)	Maximum dry laundry amount (kg)	Detergent compartment	Programme duration (Min.)	Laundry type / Descriptions
棉質快洗	*40 - 30 - “- -C” - 60	8	2	44	The quick wash program cleans your lightly soiled or unspotted colored laundry in just 44 minutes at selectable temperatures up to 40°C. Flexible temperature options provide cleaning suitable for various fabric types, while the machine's ability to wash laundry up to its full capacity allows you to easily clean large amounts of laundry.
29分鐘快洗	*30 - “- -C”	4	2	29	The quick washing program helps you save time by cleaning your lightly soiled or unspotted black and/or dark colored laundry in just 29 minutes at selectable temperatures up to 30°C. You can quickly wash your lightly soiled or unspotted black or dark colored laundry at half the capacity of the machine and complete your daily cleaning routine in a practical way.
(**) 超快洗	*30 - “- -C”	2	2	12	The quick washing program allows you to save time by cleaning your lightly soiled or unspotted black or dark colored laundry in a very short time, such as 12 minutes, at selectable temperatures up to 30°C. With this program, you can quickly wash up to a maximum of 2 kg of laundry. This program provides great convenience, especially in emergency situations or when quick cleaning is required.

NOTE: PROGRAMME DURATION MAY CHANGE ACCORDING TO THE AMOUNT OF LAUNDRY, TAP WATER, AMBIENT TEMPERATURE AND SELECTED ADDITIONAL FUNCTIONS.

(*) Washing water temperature of the programme is the factory default.

(**) Due to the short washing time of this programme, we recommend that less detergent is used. The programme may last longer than 12 minutes if your machine detects an uneven load. You can open the door of your machine 2 minutes after the completion of a washing operation. (The 2 minute period is not included in the programme duration).

The Eco 40-60 programme is able to clean normally soiled cotton laundry declared to be washable at 40°C or 60°C, together in the same cycle, and that this programme is used to assess the compliance with the EU ecodesign legislation.

NOTE: If options are changed after the program is selected, temperature and speed values may change. It is recommended to check before starting the machine.

- The most energy efficient programmes are generally those that run at a lower temperature and for a longer duration.
- Only running the washing machine when it's loaded to the full capacity as indicated by the manufacturer will help to save both water and energy.
- Program duration, energy consumption and water consumption values may vary according to wash load weight and type, selected extra functions, water hardness and ambient temperature. According to the EU Ecodesign regulation the values given for programs other than the ECO 40-60 are indicative only.
- It's recommended to use liquid detergent for the washing programmes at low temperature. The amount of detergent to be used may vary depending on the amount of laundry and the level of dirtiness of the laundry. Please follow the detergent manufacturers' recommendations for the amount of the detergent to be used.
- The noise and remaining moisture content are influenced by the spinning speed. The higher spinning speed in the spinning phase, the higher noise and the lower remaining moisture content.
- You can access the product database where the model information is stored by reading the QR code on the energy label.

Programme Name	Rated Capacity kg	Energy Consumption kWh/cycle			Programme Duration Hours:Minutes			Water Consumption Litres/Cycle			max. Temperature °C			Remaining Moisture Content % 1200 Rpm		
		Rated Capacity	1/2 Load	1/4 Load	Rated Capacity	1/2 Load	1/4 Load	Rated Capacity	1/2 Load	1/4 Load	Rated Capacity	1/2 Load	1/4 Load	Rated Capacity	1/2 Load	1/4 Load
Cotton 90	8	2,090			02:53			72,0			81			62%		
Cotton 60	8	0,820			01:50			35,0			60			62%		
Eco 40-60	8	0,862	0,301	0,181	03:38	02:48	02:48	56,8	36,0	29,0	43	27	23	53%	53%	53%
Synthetics	4	0,880			02:15			55,0			45			62%		
Fast Cotton 44°	8	0,350			00:44			30,0			40			62%		
DARK COLORS	4	0,050			00:59			27,0			20			62%		

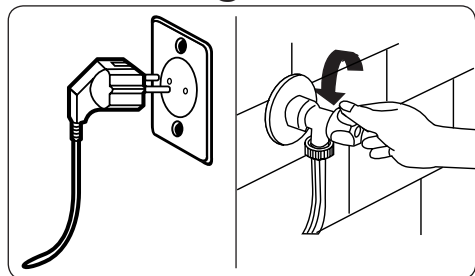
6.1 Important Information

- Use detergents, softeners and other additives suitable for automatic washing machines only. Using too much detergent can cause excessive foam to occur. If foam occur, the foam absorption system activated.
- We recommend that you fully clean the washing machine every two months. For periodic cleaning please use Drum Clean programme. If your machine does not have a Drum Clean programme, please use the Cottons-90 programme. When required, use limescale removers manufactured specifically for washing machines only.
- Never force the door open when your Washing Machine is running. You can open the door of your machine 2 minutes after the completion of a of a wash cycle. *
- Never force the door open when your Washing Machine is running. The door will open immediately after the washing cycle has ended. *
- The installation and repairing procedures should always carried out by the Authorised Service Agent in order to avoid possible risks. The manufacturer shall not be held liable for damages that may arise from procedures carried out by unauthorised persons.

(*) Specifications may vary depending on the machine purchased.

7. CLEANING AND MAINTENANCE

7.1 Warning



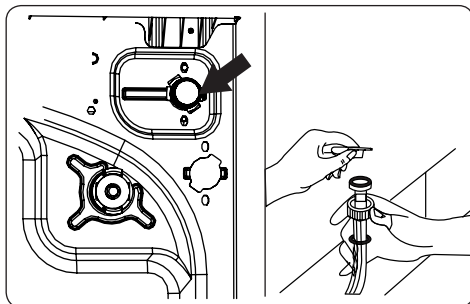
Turn your mains power supply off and remove the plug from the socket before carrying out maintenance and cleaning of your machine.

Turn off the water supply before starting maintenance and cleaning of your machine.

⚠ CAUTION: Do not use solvents, abrasive cleaners, glass cleaners or all-purpose cleaning agents to clean your Washing Machine. They may damage the plastic surfaces and other components with the chemicals they contain.

7.2 Water Inlet Filters

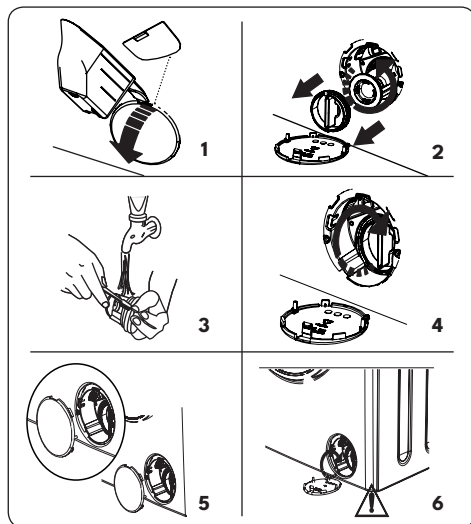
Water inlet filters prevent dirt and foreign materials from entering your machine. We recommend that these filters are cleaned when your machine is unable to receive sufficient water, although your water supply is on and the tap is open. We recommend that you clean your water inlet filters every 2 months.



- Unscrew the water inlet hose(s) from the Washing Machine.
- To remove the water inlet filter from the water inlet valve, use a pair of long-nosed pliers to gently pull on the plastic bar in the filter.
- A second water inlet filter is located in the tap end of the water inlet hose. To remove the second water inlet filter, use a pair of long-nosed pliers to gently pull on the plastic bar in the filter.
- Clean the filter thoroughly with a soft brush and wash with soapy water and rinse thoroughly. Re-insert the filter by gently pushing it back into place.

⚠ CAUTION: The filters at the water inlet valve may become clogged due to water quality or lack of required maintenance and may break down. This may cause a water leak. Any such breakdowns are out of the scope of the warranty.

7.3 Pump Filter



The pump filter system in your Washing Machine prolongs the life of the pump by preventing lint from entering your machine.

We recommend that you clean the pump filter every 2 months.

The pump filter is located behind the cover on the front-lower right corner.

To clean the pump filter:

1. You may use the washing powder spade (*) supplied with your machine or liquid detergent level plate to open the pump cover.
2. Lodge the end of the powder spade or liquid detergent level plate in the opening of the cover and gently press backwards. The cover will open.
- Before opening the filter cover, place a container under the filter cover to collect any water left in the machine.
- Loosen the filter by turning anticlockwise and remove by pulling. Wait for the water to drain.



NOTE: Depending on the amount of water inside the machine, you may have to empty the water collection container a few times.

3. Remove any foreign materials from the

filter with a soft brush.

4. After cleaning, re-fit the filter by inserting it and turning clockwise.
5. When closing the pump cover, ensure that the mountings inside the cover meet the holes on the front panel side.
6. Close the filter cover.

⚠ WARNING: The water in the pump may be hot, wait until it has cooled down before carrying out any cleaning or maintenance.

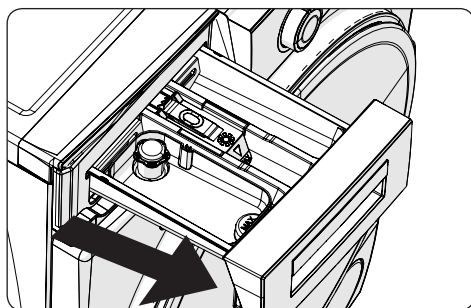
(*) Specifications may vary depending on the machine purchased.

7.4 Detergent Drawer

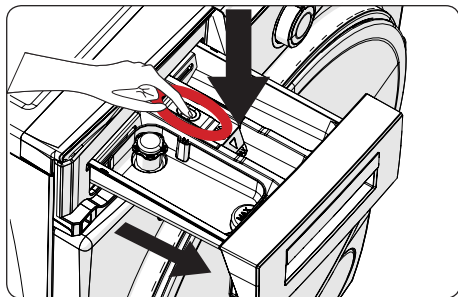
The use of detergent may cause residual build up in the detergent drawer over time. We recommend that you remove the drawer every 2 months to clean the accumulated residue.

To remove the detergent drawer:

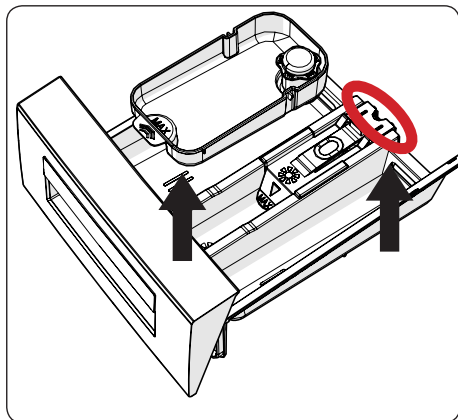
- Pull the drawer forwards until it is fully extended.



- Press the region shown below inside the detergent drawer you have pulled all the way back, and continue pulling and remove the detergent drawer from its place



- Remove the detergent drawer and disassemble the flush stopper. Clean thoroughly to completely remove any softener residue. Refit the flush stopper after cleaning and check that it is seated properly.



- Rinse with a brush and lots of water.
- Collect the residues inside the detergent drawer slot so that they don't fall inside your machine.
- Dry the detergent drawer with a towel or dry cloth and place it back

! Do not wash your detergent drawer in a dishwasher.

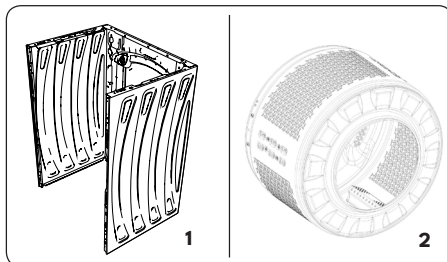
Liquid detergent apparatus(*)

For the cleaning and maintenance of the liquid level detergent apparatus, remove the apparatus from its location as shown in the picture below, and thoroughly clean the remaining detergent residues. Replace the apparatus. Make sure that

no residual material remains inside the siphon.

(*) Specifications may vary depending on the machine purchased.

8. BODY / DRUM



1. Body

Use a mild, non-abrasive cleaning agent, or soap and water, to clean the external casing. Wipe dry with a soft cloth.

2. Drum

Do not leave metallic objects such as needles, paper clips, coins etc. in your machine. These objects lead to the formation of rust stains in the drum. To clean such rust stains, use a non-chlorine cleaning agent and follow the instructions of manufacturer of the cleaning agent. Never use wire wool or similar hard objects for cleaning rust stains.

9. TROUBLESHOOTING

Repair of your machine should be carried out by an authorised service company. If your machine requires repair or if you cannot solve an issue with the information provided below, then you should:

- Unplug your machine from the mains power supply.
- Turn off the water supply.

FAULT	POSSIBLE CAUSE	TROUBLESHOOTING
Your machine does not start.	Machine not plugged in.	Plug machine in.
	Fuses are faulty.	Replace the fuses.
	No mains power supply.	Check mains power.
	Start/Pause button not pressed.	Press the Start/Pause button.
	Programme dial 'stop' position.	Turn the programme dial to the desired position.
	The machine door is not completely closed.	Close the machine door.
Your machine does not intake water.	Water tap is turned off.	Turn tap on.
	Water inlet hose may be twisted.	Check water inlet hose and untwist.
	Water inlet hose clogged.	Clean water inlet hose filters. (*)
	Inlet filter clogged.	Clean the inlet filters. (*)
	The machine door is not completely closed.	Close the machine door.
Your machine does not discharge water.	Drain hose clogged or twisted.	Check the drain hose, then either clean or untwist.
	Pump filter clogged.	Clean the pump filter. (*)
	Laundry is too tightly packed together in the drum.	Spread your laundry in the machine evenly.
Your machine vibrates.	The feet have not been adjusted.	Adjust the feet. (**)
	Transit bolts fitted for transportation have not been removed.	Remove the transit bolts from the machine. (**)
	Small load in the drum.	This will not prevent operation of your machine.
	Your machine is overloaded with laundry or laundry is unevenly spread.	Do not overload the drum. Spread laundry evenly in the drum.
Excessive foam is formed in the detergent drawer.	Excessive amount of detergent used.	Press the Start/Pause button. To stop the foam, dilute one tablespoon of softener into 1/2 litre of water and pour into the detergent drawer. Press the Start/Pause button after 5-10 mins.
	Wrong detergent used.	Only use detergents produced for automatic Washing Machines.




FAULT	POSSIBLE CAUSE	TROUBLESHOOTING
Unsatisfactory washing result.	Your washing is too dirty for the programme selected.	Use the information in the programme tables to select the most appropriate programme.
	Amount of detergent used insufficient.	Use the amount of detergent as instructed on the packaging.
	There is too much laundry in your machine.	Check that the maximum capacity for the selected programme has not been exceeded.
Unsatisfactory washing result.	Hard water.	Increase the amount of detergent following the manufacturer's instructions.
	Your laundry is too tightly packed together in the drum.	Check that your laundry is spread out.
As soon as the machine is loaded with water, water discharges.	The end of water drain hose is too low for the machine.	Check that the drain hose is at a suitable height. (**) .
No water appears in the drum during washing.	No fault. Water is in the unseen part of the drum.
Laundry has detergent residue.	Non-dissolving particles of some detergents may appear on your laundry as white spots.	Perform an extra rinse, or clean your laundry with a brush after it dries.
Grey spots appear on the laundry.	There is untreated oil, cream or ointment on your laundry.	Use the amount of detergent as instructed on the packaging in the next wash.
The spin cycle does not take place or takes place later than expected.	No fault. The Unbalanced load control system has been activated.	The Unbalanced load control system will try to spread your laundry. The spinning cycle will begin once your laundry is spread. Load the drum evenly for the next wash.

(*) See the chapter regarding maintenance and cleaning of your machine.

(**) See the chapter regarding installation of your machine.

10.AUTOMATIC FAULT WARNINGS AND WHAT TO DO

Your Washing Machine is equipped with a built-in fault detection system, indicated by a combination of flashing wash operation lights. The most common failure codes are shown below.

TROUBLE CODE	POSSIBLE FAULT	WHAT TO DO
E01 	The door of your machine is not shut properly.	Shut the door properly until you hear a click. If your machine persists to indicate fault, turn off your machine, unplug it and contact the nearest authorised service agent immediately.
E02 	The water pressure or the water level inside the machine may be low.	Check the tap is fully turned on. Mains water may be cut-off. If the problem still continues, your machine will stop after a while automatically. Unplug the machine, turn off your tap and contact the nearest authorised service agent.
E03 	The pump is faulty or pump filter is clogged or electrical connection of the pump is faulty.	Clean the pump filter. If the problem persists, contact the nearest authorised service agent. (*)
E04	Your machine has excessive amount of water.	Your machine will discharge water by itself. Once the water has drained, turn off your machine and unplug it. Turn off the tap and contact the nearest authorised service agent.

(*) See the chapter regarding maintenance and cleaning of your machine.



52524084

