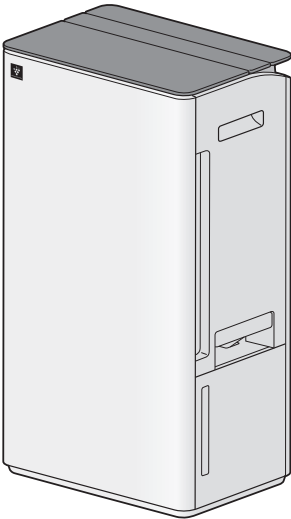


DW-T30H



HIGH-DENSITY 7000 *

“Plasmacluster” and “Device of a cluster of grapes” are trademarks of Sharp Corporation.



* The number in this technology mark indicates an approximate number of ions supplied into air of 1 cm³, which is measured around the center of a room with the “high-density plasmacluster 7000” applicable floor area (at 1.2 m height above the floor) when the product is placed close to a wall at the DEODORIZE operation “HIGH” mode setting.

DEHUMIDIFIER
OPERATION MANUAL

抽濕機
使用說明書

ENGLISH

中文

Fuses for PCB	
FUSE1	2010/392/SCT/SLT (2.5A 250V)
FUSE2	2010/SCT (10.0A 250V)
Fuse for Fan Motor	
V0F (2.0A 250V Tf 76°C)	

ENGLISH

Thank you for purchasing SHARP Dehumidifier.
Please read this manual carefully before using the product.
This manual should be kept in a safe place for handy reference.

CONTENTS

IMPORTANT SAFETY INSTRUCTIONS.....	1
PART NAMES	4
LAUNDRY OPERATION	6
DEHUMIDIFY OPERATION	7
DEODORIZE OPERATION	8
VERTICAL SWING LOUVER.....	9
TIMER.....	9
HUMIDITY SELECT	10
CHILD LOCK.....	10
CHANGING PRODUCT SETTINGS	11
HOW TO DRAIN (Water Tank)	12
HOW TO DRAIN CONTINUOUS (Hose)	13
CARE AND MAINTENANCE	14
TROUBLESHOOTING	16
SPECIFICATIONS	17

IMPORTANT SAFETY INSTRUCTIONS

Always follow basic safety precautions when using electrical appliances, including the following:

WARNING – Always observe the following to reduce the risk of electrical shock, fire, or injury:

- Read all instructions before using the product.
- Use only a 220-240 volt outlet.
- This appliance is not intended for use by persons (including children) with reduced physical, sensory or mental capabilities, or lack of experience and knowledge, unless they have been given supervision or instruction concerning use of the appliance by a person responsible for their safety. Children should be supervised to ensure they do not play with the appliance.
- If the power cord is damaged, it must be replaced by the manufacturer, its service agent, a Sharp authorized Service Center or similarly qualified persons in order to avoid a hazard.
- Be sure to remove the power plug when draining the water, before performing maintenance, when not using for a long time. Failure to do so can cause a short circuit resulting in electrical shock or fire.
- Do not use the product if the power cord or plug is damaged or if the connection to the wall outlet is loose.
- Periodically remove dust from the plug.
- Do not insert fingers or foreign objects into the air intake or air outlet.
- When removing the power plug, always hold the plug and never pull on the cord. Failure to do so can cause a short circuit resulting in electrical shock or fire.
- When removing the product, do not damage the power cord with the casters. Failure to do so can cause electric shock, heat generation, or fire.
- Be careful not to damage the power cord, it may cause electric shock, excess heat or fires.
- Do not remove the plug when your hands are wet.
- Do not place the product near gas appliances or fireplaces.
- Only a Sharp Authorized Service Center should service this product. Contact the nearest Service Center for any problems, adjustments, or repairs.
- Do not operate the product in rooms where aerosol insecticides are present. Do not operate the product in rooms where there is oily residue, incense, sparks from lit cigarettes, or chemical fumes in the air.
- Do not operate the product in places where it may get wet, such as a bathroom.
- Be cautious when cleaning the product. Strong corrosive cleansers can damage the exterior.
- Do not drink the water in the Water Tank.
- Do not expose the product to water. Doing so can cause a short circuit or electrical shock.
- Clean the Water Tank regularly. When the product is not in use, dispose of the water in the Water Tank. Leaving water in the Water Tank can cause mold, bacteria, and bad odors. In rare cases, such bacteria can be a health hazard.
- Check for bent hose/falling height when you want to drain continuous, and place the hose where it will securely drain.
- Keep the temperature around the hose above freezing point when using the hose. Inner water may leak in the room and dampen the furniture or may cause electric shock/leakage, fire.

NOTE - What to do if the product interferes with radio or TV reception.

If the product interferes with radio or television reception, try one or more of the following measures:

- Adjust or reposition the receiving antenna.
- Increase the distance between the product and the radio or TV.
- Connect the equipment into an outlet on a circuit different from that of the radio or TV receiver.
- Consult the dealer or a qualified radio or TV technician.

CAUTIONS CONCERNING OPERATION

- Do not block the air intake or air outlet.
- Do not place the product near or on hot objects, such as stoves or heaters, or where it may come into contact with steam.
- Always operate the product in an upright position.
- Turn the product off and empty the Water Tank before moving.
- When moving the product, use the handles on both sides. Do not move the product when it is in operation.
- If the product is on easily damaged flooring, an uneven surface, or thick-piled carpet, lift it up when moving.
- When moving the product by its casters, move it slowly and in a horizontal direction.
- Do not operate the product without the Water Tank properly installed.
- Clean the exterior with a soft cloth only. Do not use volatile fluids or detergents. The product surface may be damaged or cracked with Benzene paint thinner or polishing powder. In addition, the sensors may malfunction as a result.
- Do not shake the Water Tank with holding the carrying handle.
- Avoid spilling water when removing or cleaning the Water Tank.
- Do not remove the Float.
- Do not use the detergents for

maintenance of the Water Tank and Tank Cover. If cause deformation, tarnishing, cracking (water leakage).

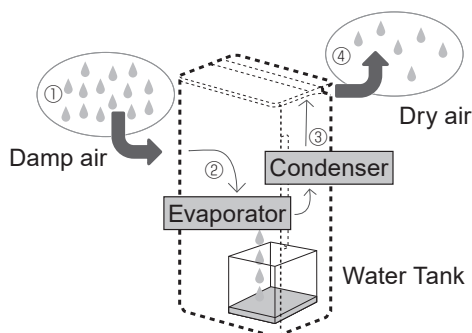
- Do not scrub the Pre-Filter hard during its maintenance.

INSTALLATION GUIDELINES

- Avoid locations where the sensors are exposed to direct wind. Doing so can cause the product to malfunction.
- Avoid locations where furniture, fabrics, or other objects can come in contact with the product and interfere with the intake and outtake of air.
- Avoid locations where the product is exposed to condensation or drastic changes in temperature. Appropriate room temperature is between 4 - 38°C.
- Place the product on a level and stable surface with sufficient air circulation. When placed on heavy carpet, the product may vibrate slightly. Place the product on a level surface to avoid water leakage from the Water Tank.
- Avoid locations that generate grease or oily smoke. Doing so can cause the product exterior to crack and the sensors to malfunction.
- Please place the product at a distance from the wall. The wall directly behind the air outlet may become dirty over time. When using the product for an extended period of time at the same location, periodically clean the walls adjacent to it.

Dehumidify

In accordance with the principle of generating water droplets when warm air with much moisture gets contact with cold items, wet air is blown in an evaporator to remove moisture.



In the following cases, the compressor will stop and will not dehumidify.

- When the room temperature is lower than 4°C or higher than 38°C.
- The 3 minutes when the product operated again in the following to protect the product.
 - * Immediately after the power plug is inserted.
 - * Immediately after the Laundry Drying/Dehumidifying operation is stopped.
- When the room temperature falls below 18°C, the compressor will stop and “HIGH” air flow mode will operate for about 12 minutes once every 45 minutes to prevent frost damage inside the product. (DEFROST mode / The DEFROST Lamp is turned on.)

INTERNAL DRY Function

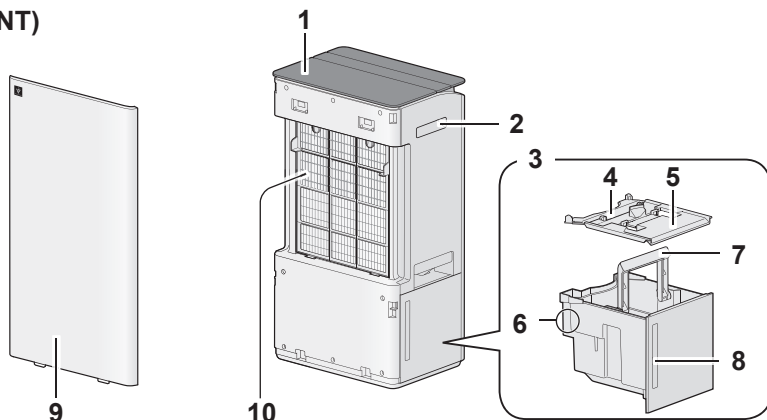
When operation stops, “INTERNAL DRY” blinks and internal drying starts. To stop internal drying, press the Power ON/OFF button once more. (page 11)

This function will dry the inside of main unit in order to remove the moisture.

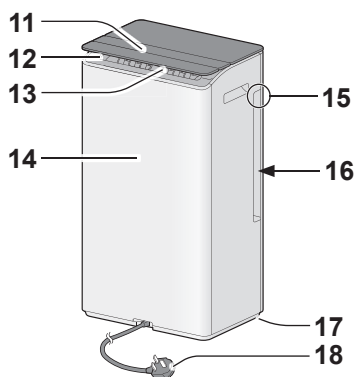
PART NAMES

MAIN BODY

(FRONT)



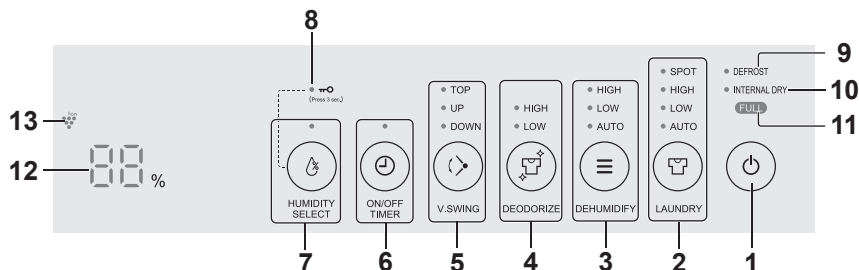
(BACK)



- 1 Operation Panel
- 2 Handle (2 Locations)
- 3 Water Tank
- 4 Drain Outlet
- 5 Tank Cover
- 6 Float
- 7 Tank Handle
- 8 Water Level Window
- 9 Front Panel
- 10 Pre-Filter

- 11 Vertical Louver
- 12 Air Outlet
- 13 Horizontal Louver
- 14 Main Body
- 15 Temperature / Humidity Sensor
- 16 Air Inlet (2 Locations)
- 17 Caster (4 Locations)
- 18 Power Cord, Plug

OPERATION PANEL



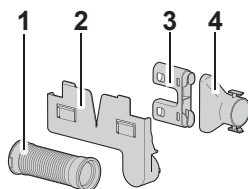
- 1 **Power ON/OFF Button**
- 2 **LAUNDRY Button, Lamp**
- 3 **DEHUMIDIFY Button, Lamp**
- 4 **DEODORIZE Button, Lamp**
- 5 **V.SWING Button, Lamp**
- 6 **TIMER Button, Lamp**
- 7 **HUMIDITY SELECT Button, Lamp**
Press 3 sec Child-Lock Button
- 8 **Child-Lock Lamp**
- 9 **DEFROST Lamp**
 - Indicates the product operates the DEFROST mode.
- 10 **INTERNAL DRY Lamp**

- 11 **FULL Lamp (Red)**
 - Blinking when the Water Tank is Full.
- 12 **DISPLAY**
 - Humidity 25% to 75% is displayed.

24% or less 76% or more

 - Indicates setting time or remaining time of ON/OFF timer.
 - Indicates setting humidity of HUMIDITY SELECT mode.
- 13 **Plasmacluster Ion Lamp (Blue)**

ACCESSORIES

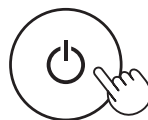


- 1 **Flexible Hose**
- 2 **Joint Part**
- 3 **Shoes Nozzle**
- 4 **Wide Nozzle**

LAUNDRY OPERATION

1. Turn the power on.

Insert the power plug into an electrical outlet and press the Power ON/OFF button.



2. Select the operation mode.



AUTO:

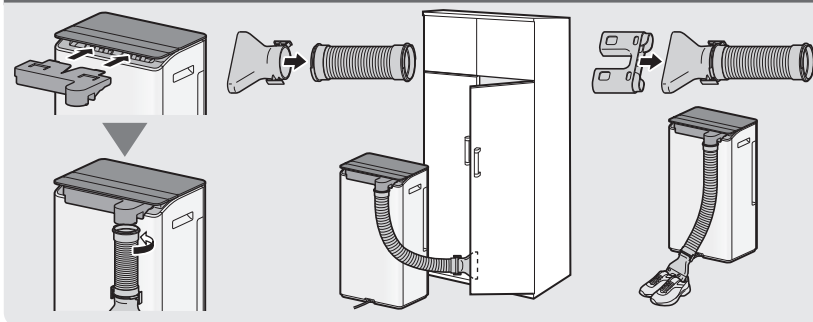
Assesses laundry dryness based on the temperature and humidity of the room, switching between dehumidifying and air blowing as it dries clothes.

When the laundry is deemed to have been dried, "AUTO" blinks and operation stops.

SPOT:

Attach the accessories to dry shoes or a closet.

Attaching accessories



3. Stop operation.

Press the Power ON/OFF button.

When operation stops, "INTERNAL DRY" blinks and internal drying starts. To stop internal drying, press the Power ON/OFF button once more. (page 11)



NOTE

- When the water tank is full, "FULL" blinks and operation stops. (page 12)



DEHUMIDIFY OPERATION

1. Turn the power on.

Insert the power plug into an electrical outlet and press the Power ON/OFF button.



2. Select the operation mode.



AUTO:

The humidity and the fan speed are automatically controlled by the “temperature and humidity sensor”.

Temperature	4-18°C	18-24°C	24-28°C	28-38°C
Target Humidity	65%	60%	55%	45%

NOTE

- Press the HUMIDITY SELECT button to change the target humidity.(page 10)

3. Stop operation.

Press the Power ON/OFF button.

When operation stops, “INTERNAL DRY” blinks and internal drying starts. To stop internal drying, press the Power ON/OFF button once more. (page 11)



NOTE

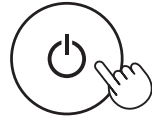
- When the water tank is full, “FULL” blinks and operation stops. (page 12)



DEODORIZE OPERATION

1. Turn the power on.

Insert the power plug into an electrical outlet and press the Power ON/OFF button.

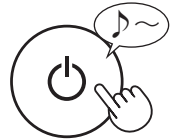


2. Select the operation mode.



3. Stop operation.

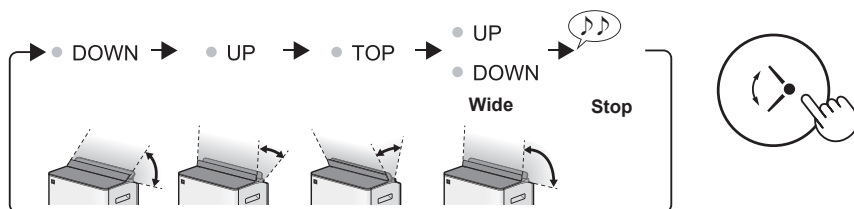
Press the Power ON/OFF button.



NOTE

- During DEODORIZE operation, Plasmacluster Ion will be set to “ON” even when “OFF” is selected.
- The unit can operate even when the water tank is full.

VERTICAL SWING LOUVER



Press the V.SWING button to select the airflow direction range.

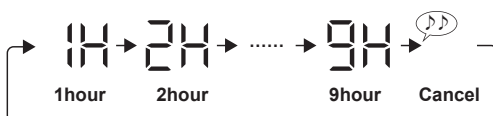
To stop the louvers at the desired position, press the V.SWING button while the louvers are swinging in "Wide".

NOTE

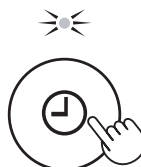
- You cannot perform any operations while the unit is operating with LAUNDRY operation "SPOT".
- Move the Horizontal Louver manually to adjust the direction of the airflow left or right.



TIMER



After 8 seconds, the beep sounds.



ON TIMER

Press the TIMER button while operation is stopped to select the time until operation starts.

The product automatically starts once the selected time passes.

OFF TIMER

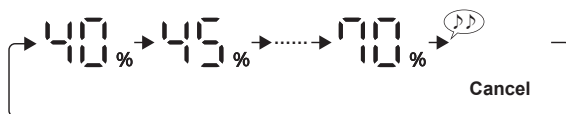
Press the TIMER button while the unit is operating to select the time until operation stops.

The product automatically stops once the selected time is reached.

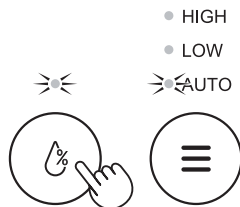
NOTE

- Press the TIMER button during OFF timer operation to display the time remaining. Press the button to change the time.

HUMIDITY SELECT



After 8 seconds, the unit will beep and return to the original display.



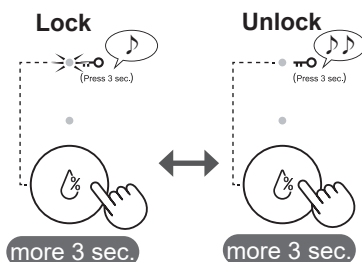
Press the HUMIDITY SELECT button to select a target humidity for DEHUMIDIFY operation "AUTO".

NOTE

- Press the HUMIDITY SELECT button to check the set humidity.

CHILD LOCK

Press the HUMIDITY SELECT button for at least 3 seconds to lock the operation button.



NOTE

- You can stop operation even when the child lock is active.

CHANGING PRODUCT SETTINGS

1. Turn the Product Off.

Then press at least 3 seconds to enter the setting mode.



2. Change functions.

Example: Setting Auto OFF "F1" to ON "02"

(1) Select and set a function number.



(2) Select and set a setting number.



3. Exit settings.



NOTE

- When a setting number is set, the next function number is displayed.
- Ends if no operation is performed for 3 minutes. If you do not press SET, the display closes with the set content not being applied.

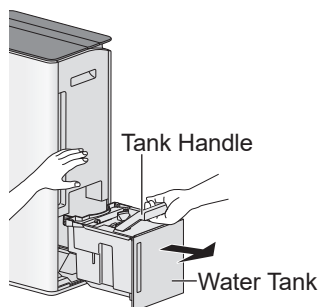
Function	Setting (: Default)
F1 (Auto Off)	01(OFF) • When set to "ON", the unit stops automatically after 12 hours and the TIMER lamp blinks. 02(ON)
F2 (Plasmacluster Ion)	01(OFF) • Even when set to "OFF", this setting turns "ON" while deodorizing and during internal drying. 02(ON)
F3 (Auto Restart)	01(OFF) • When set to "ON", if there is a power outage or the power plug is disconnected during operation, operation resumes when the power is reconnected. 02(ON)
F4 (Internal Dry)	01(OFF) • When set to "ON", the internal drying lamp lights, and after clothes drying/dehumidification finished the louvers close and air blowing operation is performed for 90 minutes. 02(ON)
F5 (Beeping Sound)	01(OFF) • When set to "OFF", the unit does not emit a sound when the water tank is full, when the unit starts or stops due to TIMER setting, or when the unit stops due to AUTO OFF setting. 02(ON)
F6 (Light Control)	01(OFF) • When set to "OFF", the unit provides a "Dark" notification for error displays or when the water tank is full. Additionally, "Dark" lights for 8 seconds when the operation button is pressed. 02(Dark) 03(ON)

HOW TO DRAIN (Water Tank)

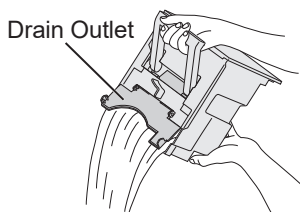
When the Water Tank is Full, “FULL” is blinking.



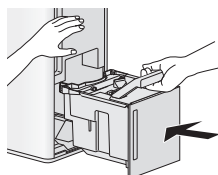
1. Remove the Water Tank.



2. Dispose the water of the Water Tank.



3. Install the Water Tank.



NOTE

- Clean the Water Tank about once a week.
If you do not clean the Water Tank, it can cause mold, bacteria, and bad odors.

AUTO OFF Function

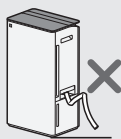
The operation will stop automatically after 12 hours in case the product has been forgotten to be turned off. (page 11)

HOW TO DRAIN CONTINUOUS (Hose)

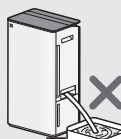
How to pipe the hose



Always have the tip slanted.



Do not bend.



Under cold weather, do not put the hose into the water.

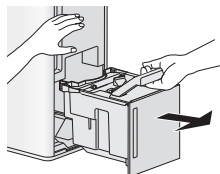
NOTE

- Immediately after drying clothes or dehumidifying, water may leak from the unit. To dry the inside of the unit body, operate on DEODORIZE for at least 60 minutes before attaching the hose.

1. Remove the Plug.

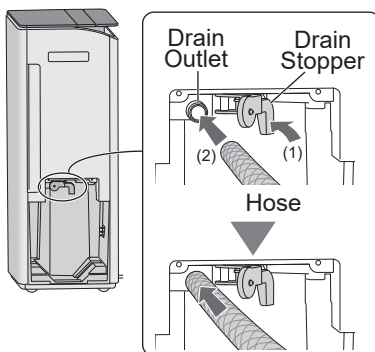


2. Remove the Water Tank.



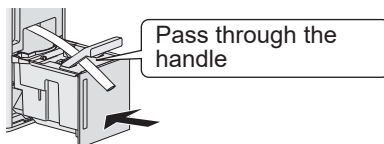
3. Insert the hose into the Drain Outlet at the located inside the unit.

Commercial hose : inner diameter 15mm (outer diameter up to 21mm)



4. Install the Water Tank.

Pass the hose through the tank handle.



CARE AND MAINTENANCE

CAUTION

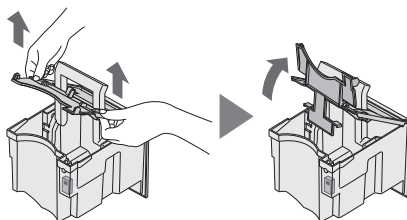
- **Make sure to turn off and unplug the product before cleaning the product.**
- **Do not use detergents other than those that are mentioned in this manual.**
 - Do not clean the product with volatile fluids.
(Benzine, paint thinner, polishing powder or grease, etc.)
Using these items may cause damage or discoloration of the product or sensor malfunction.

NOTE

- Drain before cleaning.(page 12)

WATER TANK (About once a week)

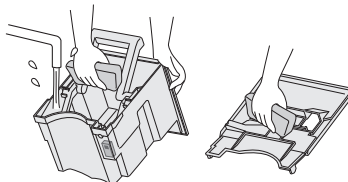
1. Remove the Tank Cover.



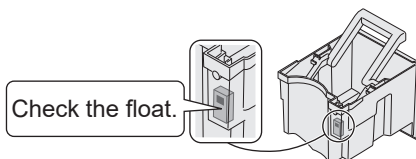
2. Wash the inside of the Water Tank.

NOTE

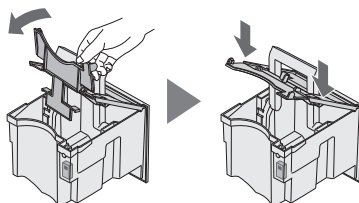
- If the dirt is heavy, please dissolve neutral detergent in lukewarm water and wash.



3. Dry the tank with a soft cloth.



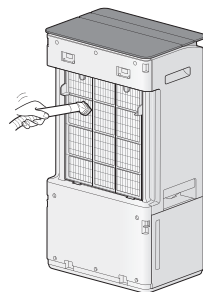
4. Install the Tank Cover.



PRE-FILTER (About once every 2 weeks)

Remove the dust gently with a cleaning tool such as a vacuum cleaner.

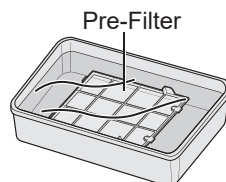
- Do not give excessive pressure to the Pre-Filter when scrubbing it.



NOTE

How to clean and remove a heavy dirt.

1. Add a small amount of neutral detergent to water and soak for about 10 minutes.
2. Rinse off the neutral detergent with clean water.
3. Completely dry in shade.



MAIN BODY (About once a month)

Wipe with a dry, soft cloth.



Do not wash with water.

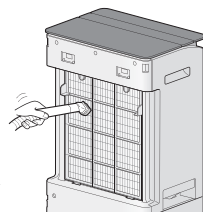
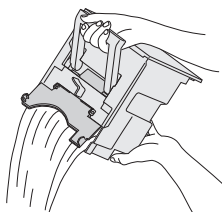


When storing for a long period (not in use)

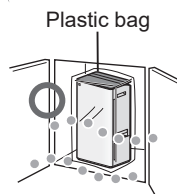
1. Dispose tank water and care the product.

NOTE

- Wipe off moisture and dry well.



2. Store in a dry place away from direct sunlight.



TROUBLESHOOTING

Before contact for service, check the following points to make sure that the problem is not a product malfunction.

The room becomes hot.

- The product generates heat during LAUNDRY operation and DEHUMIDIFY operation and the room temperature will rise. Warm air will be come out from the air outlet, but this is normal and does not indicate a problem with the product.

The product does not dehumidify.

- The performance of dehumidification level varies with the size, structure, temperature and humidity level of the room. When room temperature or humidity level is low, the performance will become low in general.
- Check whether the Pre-Filter is clean.
- Check whether the air outlet or air inlet is not blocked.

Sounds

- The product may seem rather loud for the first 2 to 3 minutes when the product is turned on. This is the sound of the compressor starting-up and is perfectly normal.
- A soft, swishing noise can be heard immediately after the product is turned on or off, and also during operation. This is the sound of the refrigerant flowing inside the product.

The sound is too loud.

- The product will sound loudly for the first few seconds upon power-on when the room temperature is low.
- Check whether the product is placed on a stable and level floor.
- Check whether the Pre-Filter is not clogged.

There is a discrepancy between the product's Humidity Monitor and another hygrometer in the room.



- There is a difference in the humidity level within the same room.
- The sensor have different measurement parameters.

The water leaks.

- Check whether the product is placed horizontally.
- When draining continuous, check whether the hose is inserted all the way seated.

Error Display

- If error occurs repeatedly, contact the Sharp Service Center.

	<ul style="list-style-type: none">▪ If the Water Tank is full, drain the water.▪ If the Water Tank is not properly placed, place the Water Tank correctly.
	<ul style="list-style-type: none">▪ Unplug the product, wait one minute, and then plug the product in again.

SPECIFICATIONS

Dehumidifying Specifications

Power Supply	220V - 240V / 50Hz	
	30°C / 80% RH	26.7°C / 60% RH
Dehumidifying Capacity ^{*1}	30 L/day	18.5 L/day
Power Consumption ^{*2}	325 W	260 W
Standby Power ^{*3}	0.9 W	
Recommended Room Size for Dehumidifying ^{*4}	39-77 m ²	
Recommended Room Size for High density Plasmacluster ion ^{*5}	26 m ²	
Water Tank Capacity	Approx. 4.5 L	
Cord Length	Approx. 2.0 m	
Dimensions (W×H×D)	359 mm × 665 mm × 248 mm	
Weight	17.2 kg	

*1 The amount of humidity that a dehumidifier removes from the air in a day when room temperature and relative humidity are kept at 30°C/80%RH and 26.7°C/60%RH respectively.

*2 The consumption value when fan speed reaches the highest.

*3 When the product's power plug is inserted in a wall outlet it consumes the standby power in order to operate electrical circuits.

*4 Based on standards of JEMA.

*5 Room size in which approximately 7000 ions per cubic centimeter can be measured in the center of the room at a height of approximately 1.2 meters from the floor when the product is placed next to a wall and is running at DEODRIZE operation "HIGH" mode setting.

中文

感謝您購買 SHARP 除菌抽濕機。
使用本產品之前，請仔細閱讀本說明書。
本說明書應妥善保存，以便隨時參考。

目錄

重要安全說明.....	1
各部位名稱.....	4
衣物乾燥.....	6
除濕模式.....	7
衣物除臭.....	8
上下擺動導風板.....	9
定時.....	9
濕度設定.....	10
兒童安全鎖.....	10
變更主機的設定.....	11
排水方法 (儲水箱).....	12
如何連續排水 (軟管).....	13
保養和維護.....	14
故障排除.....	16
規格.....	17

重要安全說明

使用電器時，請務必遵守基本的安全預防措施，包括下列各項：

警告 - 請務必遵守下列事項，降低觸電、火災或受傷的風險：

- 使用本產品前，請閱讀所有說明內容。
- 只能使用 220-240 伏特的插座。
- 本電器不適用於體力、感官或心智能力較低或缺乏經驗和知識的人（包括兒童）使用，除非有負責其安全的人員監督或指導他們使用本電器。兒童應受到監督，以便確保他們不會將本電器當玩具玩。
- 如果電源線損壞，必須由製造商、其服務代理商、SHARP 授權服務中心或具有類似資格的人員更換，以避免危險。
- 排水時、進行維護前以及長時間不使用時，請務必拔除電源插頭。否則可能會造成短路，而導致觸電或火災。
- 如果電源線或插頭損壞，或與牆上插座的連接鬆脫，請勿使用本產品。
- 請定期清除插頭上的灰塵。
- 請勿將手指或異物插入吸氣口或吹出口。
- 移除電源插頭時，請務必握住插頭，切勿拉扯電源線。否則可能會造成短路，而導致觸電或火災。
- 拆卸本產品時，請勿損壞腳輪上的電源線。否則可能會造成觸電、發熱或火災。
- 小心不要損壞電源線，否則可能會造成觸電、過熱或火災。
- 請勿在手濕的情況下拔掉插頭。
- 請勿將本產品放置於瓦斯用具或壁爐附近。
- 只有 SHARP 授權的維修中心才能維修本產品。如有任何問題、調整或維修，請聯絡最近的服務中心。
- 請勿在有噴霧殺蟲劑的房間內操作本產品。請勿在空氣中有油性殘留物、熏香、點燃香煙的火花或化學煙霧的房間中操作本產品。
- 請勿在浴室等可能弄濕的地方操作本產品。
- 清潔本產品時請小心。強腐蝕性的清潔劑可能會損壞外殼。

- 請勿飲用儲水箱中的水。
- 請勿將本產品暴露於水中。這樣做可能會造成短路或觸電。
- 請定期清潔儲水箱。不使用本產品時，請將儲水箱中的水排空。將水留在儲水箱中可能會發霉、滋生細菌及產生異味。在極少數情況下，這些細菌可能會危害健康。
- 當您要連續排水時，請檢查軟管是否彎曲 / 高度下降，並將軟管放置在可以穩固排水的地方。
- 使用軟管時，請將軟管周圍的溫度保持在冰點以上。內部的水可能洩漏在室內，使傢俱受潮，或可能造成觸電 / 漏電、火災。

注意 - 如果本產品干擾收音機或電視接收時，該如何處理。

如果本產品干擾無線電或電視接收時，請嘗試以下一種或多種措施：

- 調整或重新定位接收天線。
- 將本產品與收音機或電視機的距離拉長。
- 將設備連接至不同於收音機或電視接收器電路的插座。
- 請洽詢經銷商或合格的無線電或電視技術人員。

操作注意事項

- 請勿堵塞吸氣口或吹出口。
- 請勿將本產品放置在熱源物體附近或在熱源物體上（例如爐灶或暖爐，或可能會接觸到蒸汽的場所）。
- 操作本產品時，請務必保持產品直立。
- 移動本產品前，請關閉電源並將儲水箱內的水排空。
- 移動本產品時，請使用兩側的把手。本產品運轉時切勿移動。
- 如果本產品位於容易損壞的地板、凹凸不平的表面或厚鋪地毯上，移動時請將本產品抬起來。
- 在推動腳輪移動本產品時，請以水平方向慢慢移動。

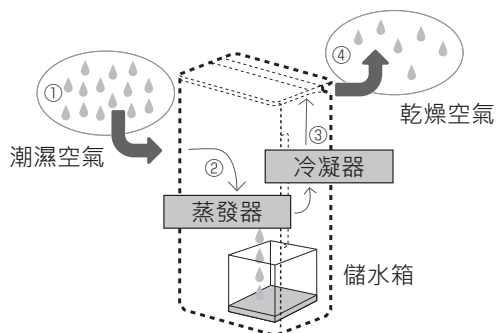
- 在正確安裝儲水箱之前，切勿運行本產品。
- 僅可使用軟布清潔外部。請勿使用揮發性液體或清潔劑。使用苯塗料稀釋劑或拋光粉可能會損壞產品表面或使表面裂開。此外，感應器可能會因此發生故障。
- 請勿握住把手搖晃儲水箱。
- 拆卸或清潔儲水箱時，應避免水溢出。
- 請勿拆除浮板。
- 在保養儲水箱和儲水箱蓋時，請勿使用清潔劑。否則會導致變形、變色、龜裂（漏水）。
- 保養前置過濾器時，請勿用力擦洗。

安裝指南

- 避免將感應器安裝在直接面對出風口的位置，這樣做可能會影響主機正常工作。
- 請避免在可能會與傢俱、織物或其他物品接觸的位置使用主機，以免可能無法確保吸氣口或吹出口通暢。
- 請勿在溫差極大或會導致主機直接暴露於冷凝環境的位置使用。主機僅適合在 4 - 38°C 之間的室溫下使用。
- 將本產品放置在平整穩固且通風良好的表面。將主機放置於鋪設厚地毯的位置，可能會導致主機微微震動。請將主機置於平整的表面，以避免儲水箱漏水。
- 請避免在會產生油脂或油煙的場所使用主機，以免可能會導致主機表面裂開以及感應器發生故障。
- 請將產品放置在與牆壁有一段距離的位置。在經過一段時間後，可能會導致直接位於吹出口後面的牆壁變髒。在相同位置長時間使用主機時，應定期清潔相鄰的牆壁。

除濕

根據高濕度的溫暖空氣接觸冰冷物品時會產生水滴的原理，將濕空氣吸入蒸發器中，以除去水分。



在下列情況中，壓縮機將會停止且不會除濕。

- 室溫低於 4°C 或高於 38°C 。
- 在下列情況中，本產品會再次運行 3 分鐘，以保護本產品。
 - * 插上電源插頭後立即進行。
 - * 在洗衣烘乾 / 除濕操作停止後立即進行。
- 當室溫低於 18°C 時，壓縮機將會停止，且每 45 分鐘會運行約 12 分鐘「強」風量模式，以避免主機內部受到霜害。（除霜模式 / 除霜指示燈亮起）

內部除濕功能

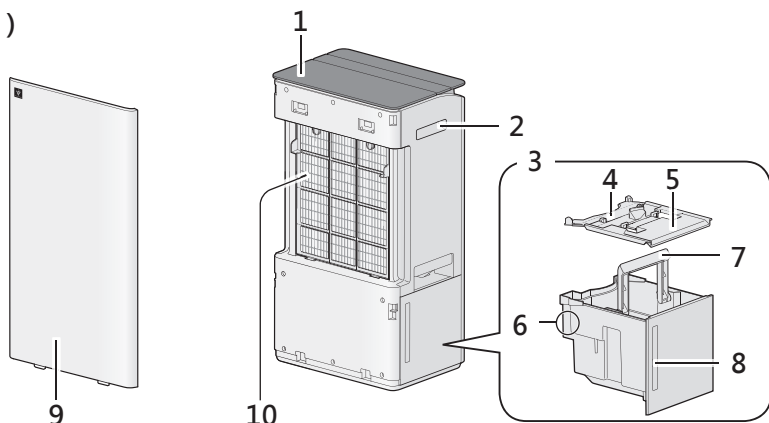
運轉停止時，「內部除濕」閃爍，內部乾燥開始運行。若要停止運行內部乾燥，請再按一次開 / 關按鈕。（第 11 頁）

此功能將烘乾主機內部以去除濕氣。

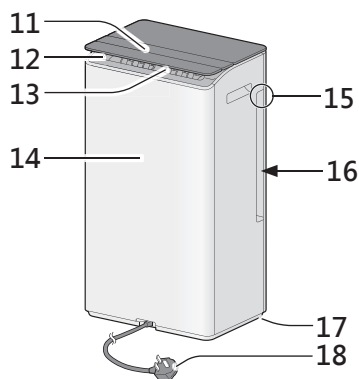
各部位名稱

主機

(正面)



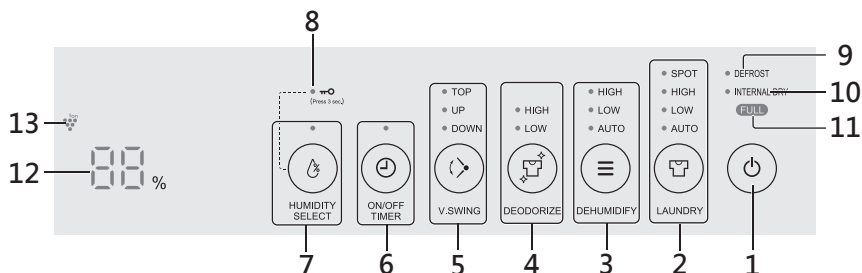
(背面)



- 1 操作面板
- 2 把手 (2 處位置)
- 3 儲水箱
- 4 排水口
- 5 儲水箱蓋
- 6 浮板
- 7 儲水箱手柄
- 8 水位窗
- 9 前面板
- 10 前置過濾網

- 11 垂直導風板
- 12 吹出口
- 13 水平導風板
- 14 主機
- 15 溫度 / 濕度感應器
- 16 吸氣口 (2 處位置)
- 17 腳輪 (4 處位置)
- 18 電源線、電源插頭

操作面板

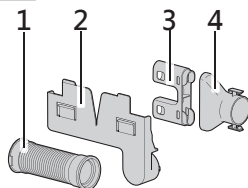


- 1 開 / 關按鈕
- 2 衣物乾燥按鈕、指示燈
- 3 除濕模式按鈕、指示燈
- 4 衣物除臭按鈕、指示燈
- 5 擺風按鈕、指示燈
- 6 定時按鈕、指示燈
- 7 濕度設定按鈕、指示燈
按 3 秒 兒童安全鎖按鈕
- 8 兒童安全鎖指示燈
- 9 除霜指示燈
• 指示主機在除霜模式下運行。
- 10 內部除濕指示燈

- 11 滿水指示燈 (紅色)
• 儲水箱滿水時會閃爍。
- 12 顯示
• 顯示 25% 至 75% 的濕度。

24% 或更低 76% 或更高
• 指示定時 (開 / 關) 的設定時間或剩餘時間。
• 指示設定濕度設定模式的濕度。
- 13 自動除菌離子指示燈 (藍色)

配件

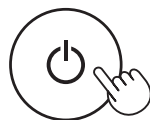


- 1 彈性軟管
- 2 接合零件
- 3 鞋型噴嘴
- 4 廣域噴嘴

衣物乾燥

1. 開啟電源。

將電源插頭插入電源插座，然後按下開 / 關按鈕。



2. 選擇運轉方式。



自動：

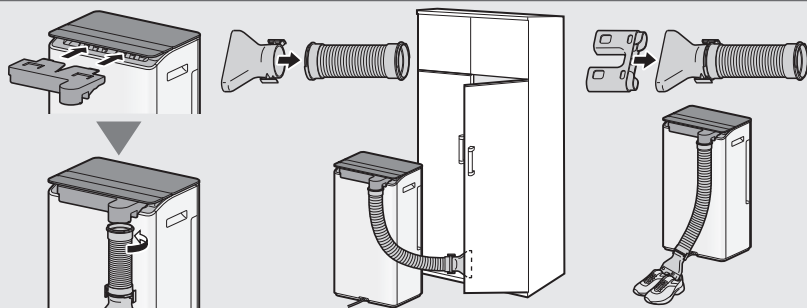
根據室內的溫度和濕度評估衣物的乾燥程度，在除濕和吹風之間切換，藉此烘乾衣物。

認為衣物已烘乾時，「自動」會閃爍並停止運行。

烘鞋：

將配件固定在乾燥的鞋子或衣櫃上。

安裝配件



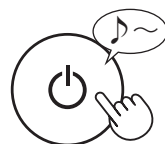
3. 停止運行。

按下開 / 關按鈕。

運轉停止時，「內部除濕」閃爍，內部乾燥開始運行。

若要停止運行內部乾燥，請再按一次開 / 關按鈕。

(第 11 頁)



注意事項

- 儲水箱滿水時，「滿水」指示燈會閃爍並停止運行。
(第 12 頁)



除濕模式

1. 開啟電源。

將電源插頭插入電源插座，然後按下開 / 關按鈕。



2. 選擇運轉方式。



自動：

由「溫度和濕度感應器」自動控制濕度和風量。

溫度	4-18°C	18-24°C	24-28°C	28-38°C
目標濕度	65%	60%	55%	45%

注意事項

- 按下濕度設定按鈕即可變更目標濕度。(第 10 頁)

3. 停止運行。

按下開 / 關按鈕。

運轉停止時，「內部除濕」閃爍，內部乾燥開始運行。

若要停止運行內部乾燥，請再按一次開 / 關按鈕。

(第 11 頁)



注意事項

- 儲水箱滿水時，「滿水」指示燈會閃爍並停止運行。(第 12 頁)



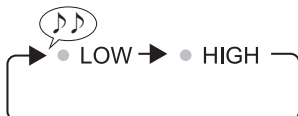
衣物除臭

1. 開啟電源。

將電源插頭插入電源插座，然後按下開 / 關按鈕。

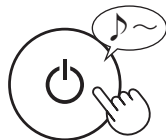


2. 選擇運行模式。



3. 停止運行。

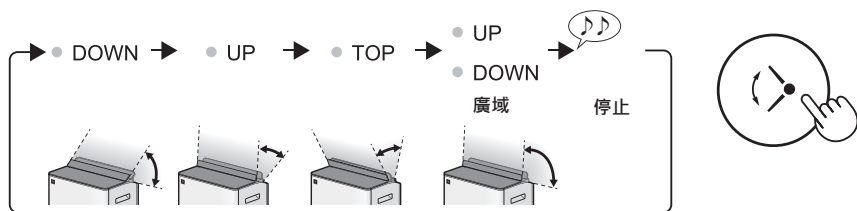
按下開 / 關按鈕。



注意事項

- 在衣物除臭運行期間，即使選擇了「關」，自動除菌離子也會設定為「開」。
- 本功能可在儲水箱滿水時運行。

上下擺動導風板

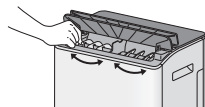


按下擺風按鈕選擇氣流方向範圍。

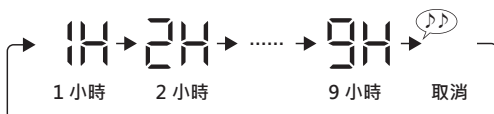
若要在所需位置停止導風板，請在導風板以「廣域」擺動時按下擺風按鈕。

注意事項

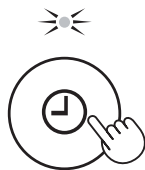
- 主機在衣物乾燥運行「烘鞋」時，您不能執行任何其他操作。
- 手動移動水平導風板，向左或向右調整氣流方向。



定時



8 秒後發出嗶聲，完成設定。



開機定時器

在運行停止時按下定時按鈕，可選擇運行啟動前的時間。
主機將會在選定的時間結束後自動啟動。

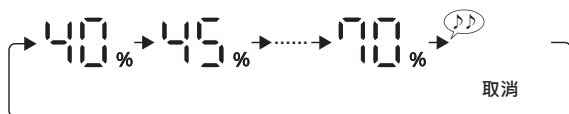
關機定時器

在主機運行時按下定時按鈕，可選擇運行停止的時間。
主機將會在選定的時間到達時自動停止。

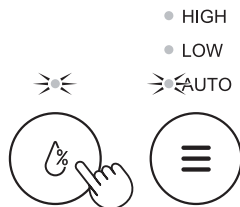
注意事項

- 在關機定時器運行期間，按下定時按鈕可顯示剩餘時間。按下按鈕可更改時間。

濕度設定



8 秒後主機會發出嗶嗶聲，並返回原始顯示。



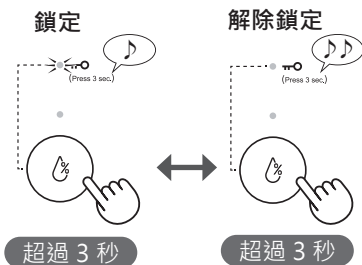
按下濕度設定按鈕，選擇「自動」除濕運行的目標濕度。

注意事項

- 按下濕度設定按鈕，確認設定濕度。

兒童安全鎖

長按濕度設定按鈕 3 秒以上，鎖定運行按鈕。



注意事項

- 即使兒童安全鎖處於啟動狀態，您也可以停止運行。

變更主機的設定

關閉主機電源。

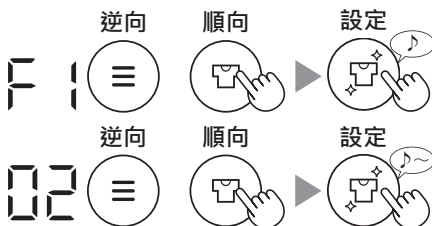
1. 長按衣物除臭按鈕 3 秒以上進入設定模式。



2. 變更功能。

範例：設定「F1」自動關機功能為「02」開啟時

- (1) 選擇並設定功能編號。



- (2) 選擇並設定編號。

3. 退出設定。



注意事項

- 設定編號時，顯示下一個功能編號。
- 如果 3 分鐘內未執行任何操作，則會結束。如果不按設定，顯示將會關閉且設定內容不會套用。

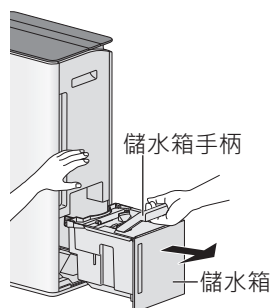
功能	設定 (預設)
F1 (自動關機)	01(關) • 設定為「開」時，主機會在 12 小時後自動停止，且定時指示燈會閃爍。 02(開)
F2 (自動除菌離子)	01(關) • 即使設定為「關」，此設定在除臭和內部乾燥時也會變成「開」。 02(開)
F3 (自動重新啟動)	01(關) • 設定為「開」時，如果在運行期間發生停電或電源插頭中斷，則在重新接上電源時會恢復運行。 02(開)
F4 (內部除濕)	01(關) • 設定為「開」時，內部烘乾指示燈會亮起，當衣物烘乾 / 除濕完成後，導風板會關閉，並進行 90 分鐘的吹風運行。 02(開)
F5 (嗶聲)	01(關) • 設定為「關」時，當儲水箱滿水時，因定時器設定而啟動或停止，或因自動關機設定而停止時，主機不會發出聲音。 02(開)
F6 (燈光控制)	01(關) • 設定為「關」時，主機會在顯示錯誤或在儲水箱滿水時提供「較暗」的指示燈通知。此外，按下任一模式按鈕時，「較暗」的指示燈會亮起 8 秒鐘。 02(較暗) 03(開)

排水方法 (儲水箱)

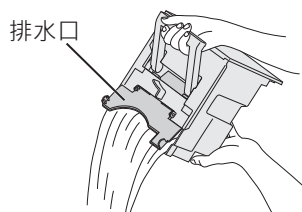
儲水箱滿水時，「滿水」會閃爍。



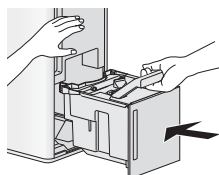
1. 拆下儲水箱。



2. 倒掉儲水箱中的水。



3. 安裝儲水箱。



注意事項

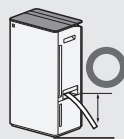
- 大約每週清潔一次儲水箱。
若未清潔儲水箱，則可能會發霉、滋生細菌及產生異味。

自動關機功能

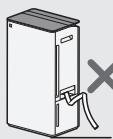
如果忘記關閉主機時，將會在 12 小時後自動停止運行。（第 11 頁）

如何連續排水 (軟管)

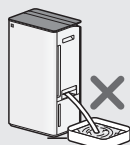
如何使用軟管排水



務必使尖端
傾斜。



不要使軟管
彎曲。



在寒冷的天氣下，請勿
將軟管放入
水中。

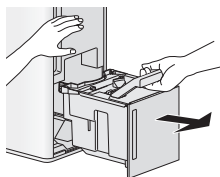
注意事項

- 烘乾衣物或除濕後，主機可能會立即漏水。若要使機身內部乾燥，請在衣物除臭模式下運行至少 60 分鐘，然後再接上軟管。

1. 拔下電源插頭。

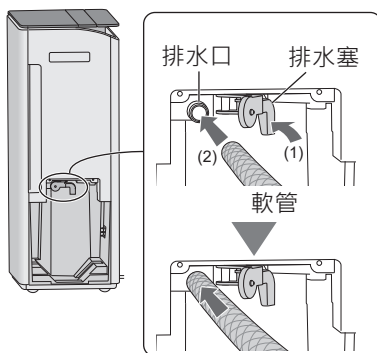


2. 拆下儲水箱。



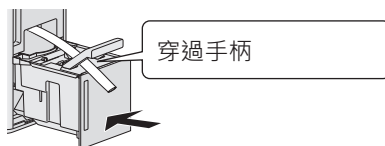
3. 將軟管插入位於主機內部的排水口。

市售軟管：內徑 15mm(外徑可達 21mm)



4. 安裝儲水箱。

將軟管穿過儲水箱手柄。



保養和維護

警告

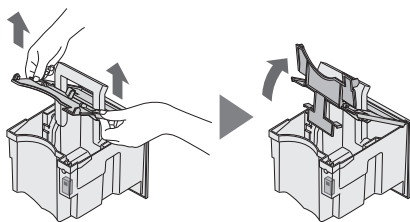
- 清潔主機前，請務必關閉電源並拔掉插頭。
- 請勿使用本手冊所述以外的清潔劑。
 - 請勿使用揮發性液體（苯塗料稀釋劑、拋光粉或油脂等）清洗主機。使用這些清潔用品可能會導致主機損壞、變色或感應器故障。

注意事項

- 清潔前請先將水排空（第 12 頁）

儲水箱（大約每週一次）

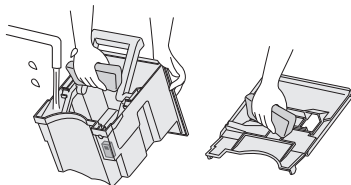
1. 拆下儲水箱蓋。



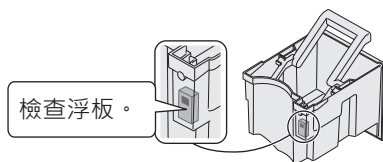
2. 清洗儲水箱內部。

注意事項

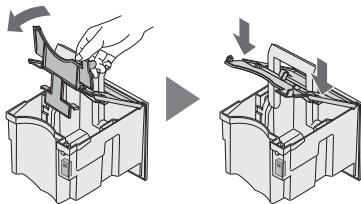
- 如果污垢厚重，請將中性清潔劑溶於溫水中並進行清洗。



3. 使用軟布擦乾儲水箱。



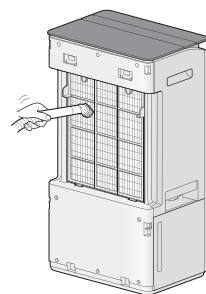
4. 安裝儲水箱蓋。



前置過濾網 (大約每 2 週一次)

使用吸塵器等清潔工具輕輕清除灰塵。

- 擦洗前置過濾網時，切勿過度施力。

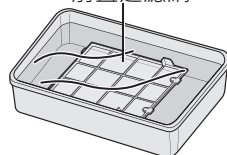


注意事項

如何清潔和去除厚重污垢。

1. 將少量中性清潔劑加入水中並浸泡大約 10 分鐘。
2. 使用清水洗去中性清潔劑。
3. 在陰涼處完全晾乾。

前置過濾網



主機 (大約每月一次)

使用乾軟布擦拭。



請勿用水清洗。

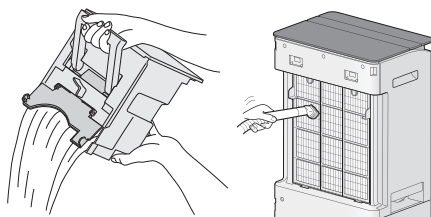


長時間存放 (不使用) 時

1. 將儲水箱的水排空並維護主機。

注意事項

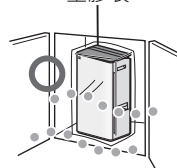
- 擦去濕氣並充分晾乾。



2. 存放在乾燥的位置，避免陽光直射。



塑膠袋



故障排除

在聯絡要求維修之前，請先檢查下列事項，確保該問題非主機故障引起。

房間變熱。

- 主機在衣物乾燥運行和除濕運行期間會產生熱能，導致室溫升高。暖空氣從吹出口排出，但是此為正常現象，不代表主機有問題。

主機無法除濕。

- 除濕等級的效能會隨房間大小、結構、溫度及濕度等級而異。室溫或濕度較低時，效能通常也會降低。
- 檢查前置過濾網是否乾淨。
- 檢查吹出口或吸氣口是否堵塞。

聲音

- 主機開啟後 2 到 3 分鐘內，運行聲音比較大。這是壓縮機啟動的聲音，非常正常。
- 在主機開啟或關閉後以及運行期間，會立即聽到柔和的嗖嗖聲。這是冷媒在主機內流動的聲音。

聲音太大聲。

- 室內溫度較低時，主機在開啟後數秒鐘內發出很大的聲音。
- 檢查主機是否放置在平穩的地面上。
- 檢查前置過濾網是否堵塞。

主機的濕度偵測指示燈與房間內另一個濕度計的顯示不同。


- 同一個房間內的濕度等級不同。
- 感應器有不同的測量參數。

漏水。

- 檢查主機是否水平放置。
- 在連續排水時，檢查軟管是否已完全插入。

顯示錯誤

- 如果重複出現錯誤，請聯絡客戶服務中心。

	<ul style="list-style-type: none">▪ 如果儲水箱滿水時，請將水排空。▪ 如果儲水箱未正確放置，請正確放置儲水箱。
00.01.04.05	<ul style="list-style-type: none">▪ 拔下主機電源插頭，等待一分鐘，然後重新插上主機電源插頭。

規格

Dehumidifying Specifications

電源	220V - 240V / 50Hz	
	30° C / 80% RH	26.7° C / 60% RH
抽濕能力 *1	30 公升 / 日	18.5 公升 / 日
耗電量 *2	325 瓦	260 瓦
備用狀態 *3	0.9 W	
抽濕面積 *4	39-77 平方米	
高濃度 Plasmacluster 之適用面積 *5	26 平方米	
儲水箱容量	約 4.5 公升	
電源線長度	約 2.0 米	
外形尺寸	359 毫米 (闊) × 665 毫米 (高) × 248 毫米 (深)	
重量	17.2 公斤	

*1 抽濕能力是指連續保持室溫及相對濕度於 30°C / 80%RH 及 26.7°C / 60%RH 時的每天抽濕量。

*2 耗電量是在最大風速下的數值。

*3 備用狀態是指將電源插頭插入電源插座後而電源開關鍵設定在關的狀態。

*4 根據 JEMA 標準。

*5 產品靠近牆壁，以衣物除臭模式運作，離地高度約為 1.2 公尺時，可在房間中心測量大約每立方公分 7000 個離子的房間大小。

MEMO

SHARP

SHARP CORPORATION